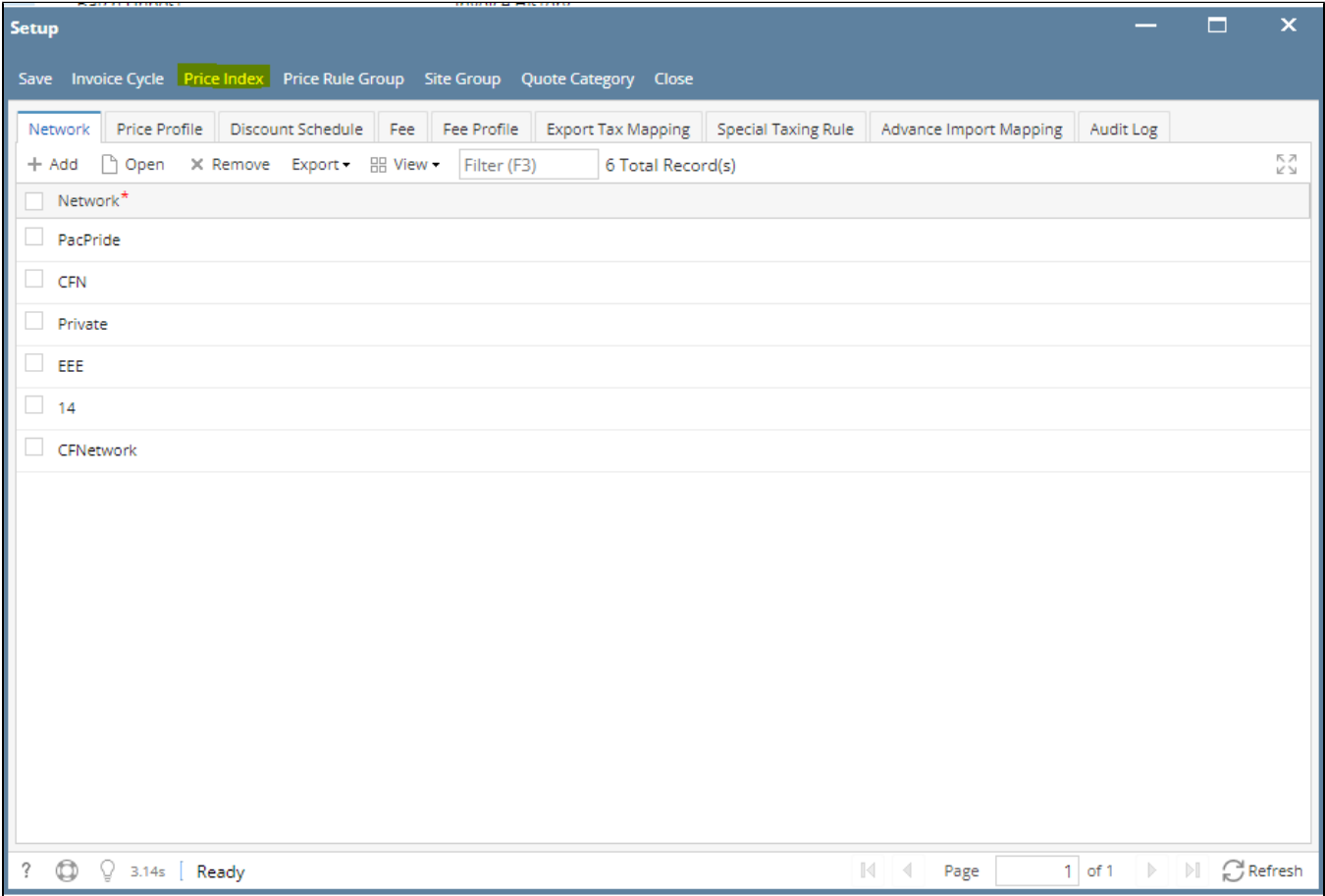


How to Create Price Index

- 1. From **Card Fueling** module, click **Setup**. The **Setup** screen will be displayed.
Click **Price Index** button. **Price Index** screen will be displayed.



Price Index

Save

Undo

Close

✕ Remove

Export ▾

View ▾

Filter (F3)

7 Total Record(s)

↕↕

<input type="checkbox"/> Price Index*	Description	Type
<input type="checkbox"/> SamplePriceIndex	SamplePriceIndex	Retail
<input type="checkbox"/> SIPO AVG	Anti-OPIS Vancouver	
<input type="checkbox"/> PACNW Retail	Pacific Northwest Retail	
<input type="checkbox"/> Posted Retail	Posted Retail	Retail
<input type="checkbox"/> Cost +	Cost + Index	Cost
<input type="checkbox"/> FW Retail	Fort Wayne Retail	Retail
<input type="checkbox"/> OPIS AVG FW	OPIS Average Fort Wayne	
<input type="checkbox"/>		

?

1.64s

Ready

Refresh

2. Click on the blank cell to enable typing action. Enter **Price Index** name, **Description** and **Type**.

Type has 3 selections: Retail, Cost, Fixed.

Price Index

Save Undo Close

Remove

Export

View

Filter (F3)

7 Total Record(s)

<input type="checkbox"/>	Price Index*	Description	Type
<input type="checkbox"/>	SamplePriceIndex	SamplePriceIndex	Retail
<input type="checkbox"/>	SIPO AVG	Anti-OPIS Vancouver	
<input type="checkbox"/>	PACNW Retail	Pacific Northwest Retail	
<input type="checkbox"/>	Posted Retail	Posted Retail	Retail
<input type="checkbox"/>	Cost +	Cost + Index	Cost
<input type="checkbox"/>	FW Retail	Fort Wayne Retail	Retail
<input type="checkbox"/>	OPIS AVG FW	OPIS Average Fort Wayne	
<input checked="" type="checkbox"/>	Test	Sample	Retail
<input type="checkbox"/>			Type
			Retail
			Cost
			Fixed

?

1.64s

Edited

- Click **Save** toolbar button to save created **Price Index**.
Then click the **Close** toolbar button or **X** button.