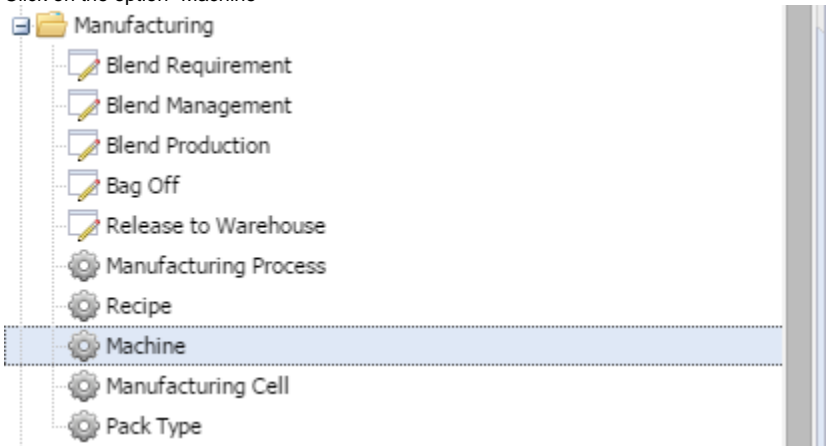
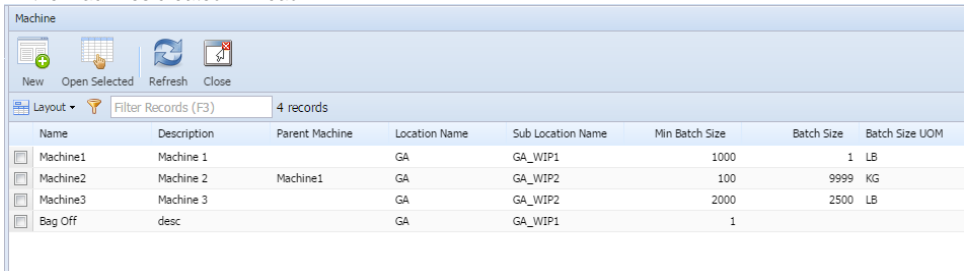


How do I delete a machine?

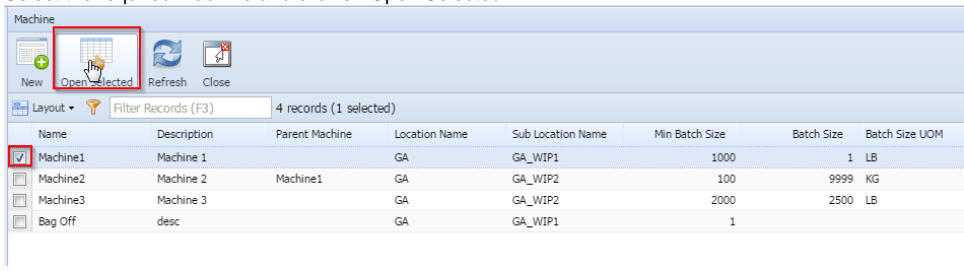
1. Click on the option "Machine"



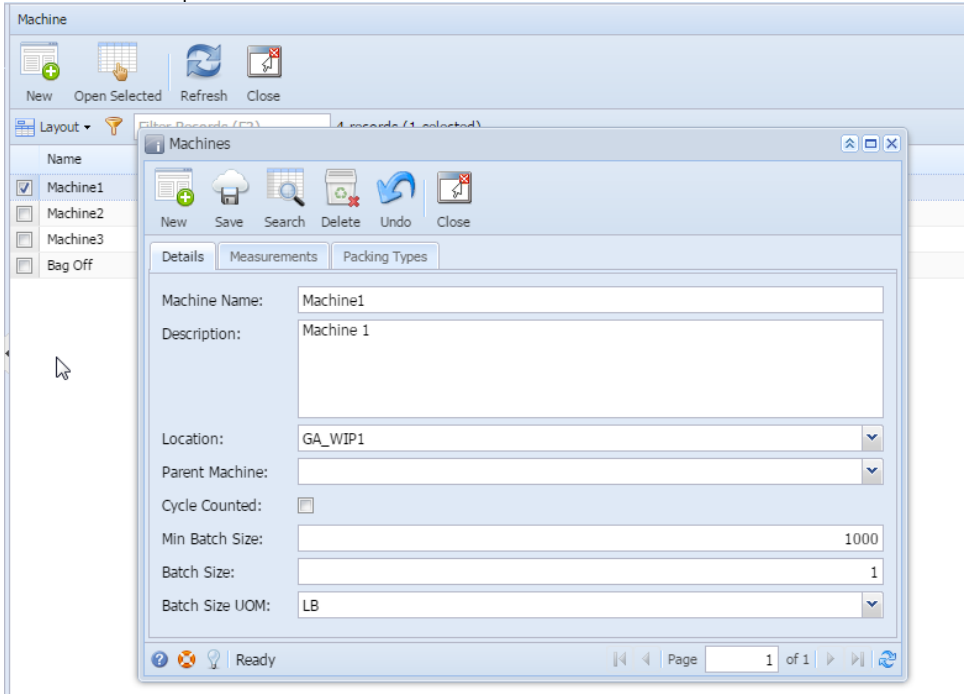
2. All the Machines created will load.



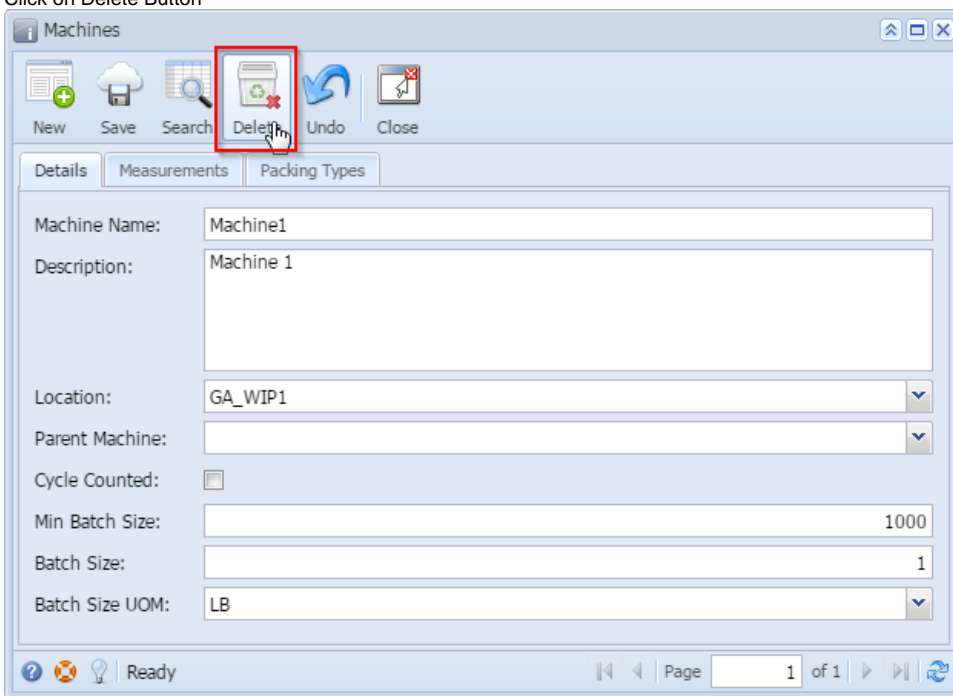
3. Select the required machine and click on Open Selected



4. Machine detail will open

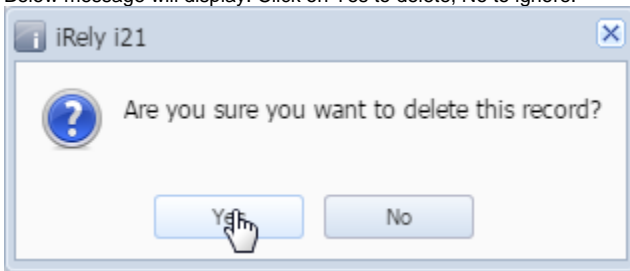


5. Click on Delete Button



The screenshot shows the 'Machines' application window. The title bar is 'Machines'. The menu bar includes 'New', 'Save', 'Search', 'Delete', 'Undo', and 'Close'. The 'Delete' button, which has a trash can icon, is highlighted with a red rectangular box. Below the menu bar are three tabs: 'Details', 'Measurements', and 'Packing Types'. The 'Details' tab is active, showing a form with the following fields: 'Machine Name' (text box with 'Machine1'), 'Description' (text box with 'Machine 1'), 'Location' (dropdown menu with 'GA_WIP1'), 'Parent Machine' (dropdown menu), 'Cycle Counted' (checkbox), 'Min Batch Size' (text box with '1000'), 'Batch Size' (text box with '1'), and 'Batch Size UOM' (dropdown menu with 'LB'). The status bar at the bottom shows 'Ready' and 'Page 1 of 1'.

6. Below message will display. Click on Yes to delete, No to ignore.



The screenshot shows a confirmation dialog box titled 'iRely i21'. It contains a question mark icon and the text 'Are you sure you want to delete this record?'. At the bottom, there are two buttons: 'Yes' and 'No'. A mouse cursor is pointing at the 'Yes' button.