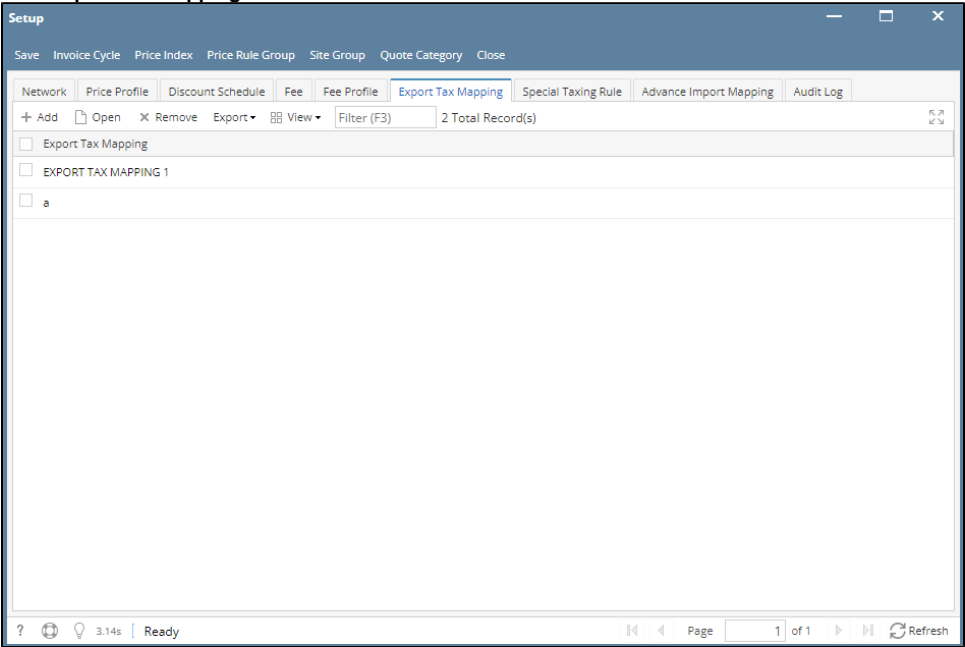
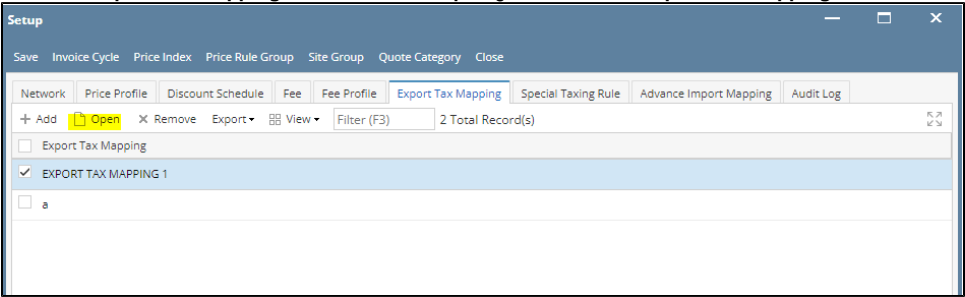


How to Edit an Export Tax Mapping

- 1. From **Card Fueling** module, click **Setup**. The **Setup** screen will be displayed.
Click **Export Tax Mapping** tab screen.



- 2. Select an **Export Tax Mapping** record then click **Open** grid button. The **Export Tax Mapping** detail screen will be displayed.



Export Tax Mapping - EXPORT TAX MAPPING 1

New Save Delete Search Undo Close

Details Audit Log

DescriptionEXPORT TAX MAPPING 1

File Field Mapping * CFN

✕ Remove

Export ▾

View ▾

Filter (F3)

1 Total Record(s)

↕

<input type="checkbox"/> Record Marker	Tax Class	Position	Length	Format
<input type="checkbox"/> TAX!	State Sales Tax - TM	1	0	YYYYMMDD
<input type="checkbox"/>		0	0	

?

0.57s

Ready

⏮

⏪

Page

1

of 1

⏩

⏭

Refresh

- Modify any of the **Export Tax Mapping** fields and/or columns. Click **Save** toolbar button and the changes will be saved.