

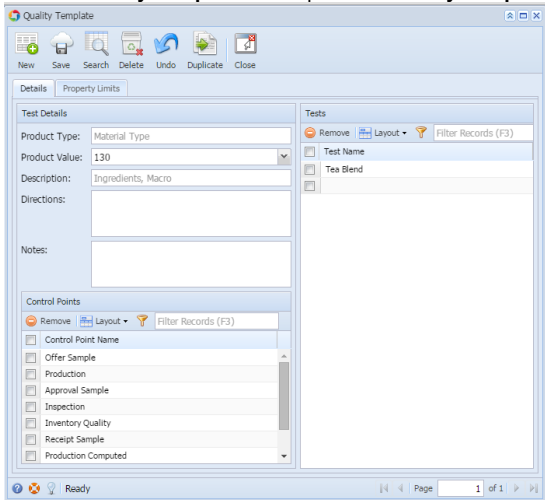
Quality Template

Overview

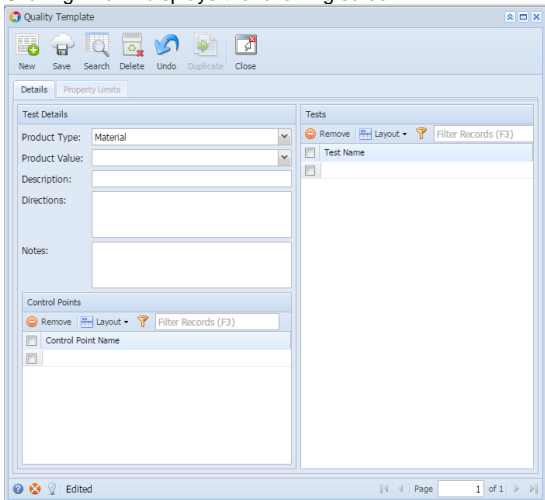
Quality Template List allows users to define new Quality Templates for various items at different Control Points. A Quality Template can be associated with a previously created Tests.

Accessing Quality Template

1. Login into the application.
2. Select **Quality**
3. Click on **Quality Template**. This opens the **Quality Template List** screen as shown below.



4. Quality Template has 2 Tabs.
 - a. **Details**
 - b. **Property Limits**
5. This screen has a filtering criterion (**Product Type**) based on which information is loaded. The Product Type can be one of the following
 - a. Material Type
 - b. Material
 - c. Receipt
 - d. Shipment
 - e. Transfer
6. Clicking "**New**" displays the following screen



7. It has 3 Sections
 - a. Test Details
 - b. Controls Points.
 - c. Tests

Details Tab

Test Details section

The fields under the "**Test Details**" section are listed below

Fields	Description	Example
Product Type	Select the Product Type. Based on the selection, all the configured items of that particular Product Type appear in the Product Value drop-down.	Material Type
Product Value	Will have values based on product type. if product type is material Type then list will be populated with all configured material Type. if product type selected is material then list will be populated with configured materials. For product types receipt, shipment and transfer this list will be blank	103
Description	if Product type is material category will populate the description of material category selected. If product type is material then description of material selected will be shown	
Directions	Instructions while performing quality capture	
Notes	Remarks/comments	

Control Points section

This list will have values:

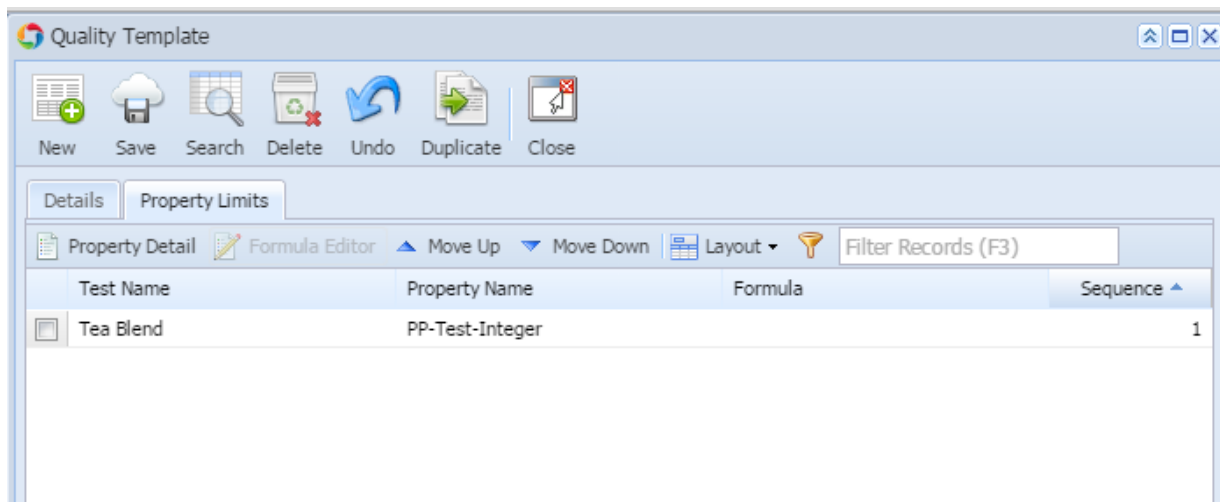
1. Offer sample
2. Approval sample
3. Inspection
4. Inventory Quality
5. Receipt sample
6. Production
7. Production computed
8. Shipping

Tests section

List all the configured and selected tests.

Property Limits Tab

The Property Limits tab loads data only when a Test is selected in the Details tab. This tab lists out information about the selected property as shown below:



The fields under "Property Limits" tab are listed below

Fields	Descriptions	Example
Test Name	List the selected test Name	Tea Blend
Property Name	List the selected Property	
Formula	Will display configured formula for the property	
Sequence	Sequence in which properties should show while quality capture	

Property Detail	When user clicks on the button, property configuration screen will open and users can modify approved quality values. any changes done here will be applicable only for the template and they will not be updated to original property configuration	
Formula Editor	When user clicks on the button formula editor screen will open	
Move Up	Selected property will be moved up	
Move Down	Selected property will be moved down	

NOTE: The field Product Type cannot be edited.