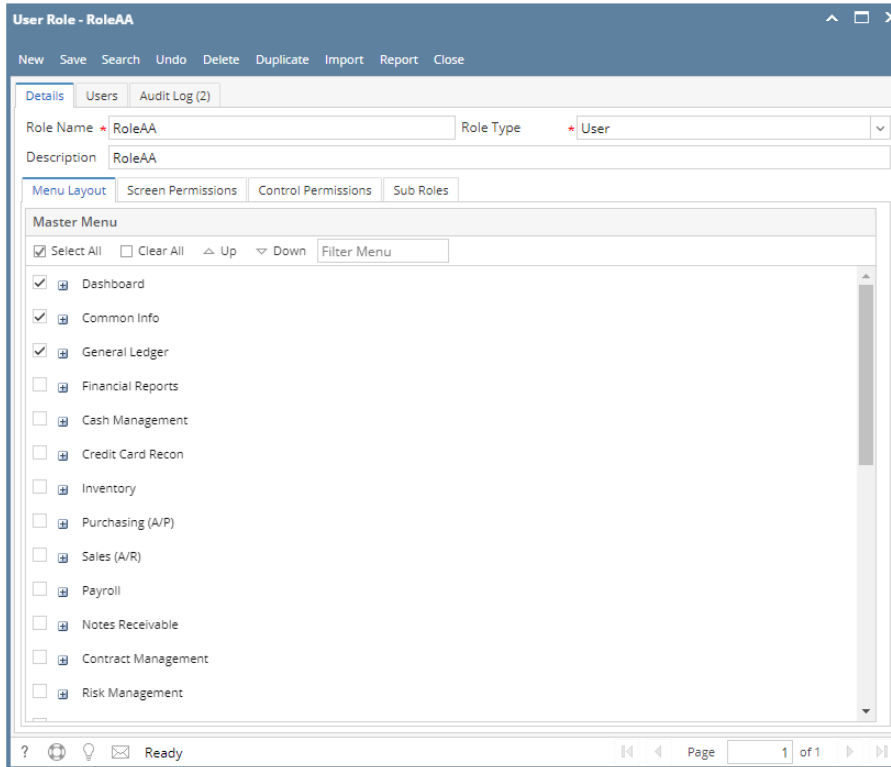


How to Import a User Role

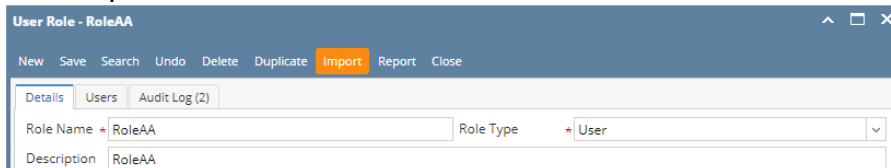
Exporting/Importing a User Role helps the PM to configure sets of roles that can be used in mass deployment for customers.

Here are the steps to Import a User Role:

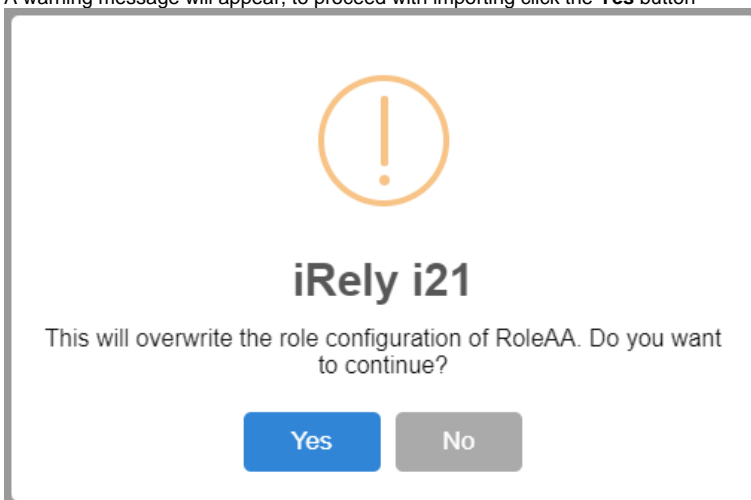
1. Log in as **Admin user**
2. On user's menu panel, go to **System Manager** folder then click **User Roles**
3. Select and open one user role



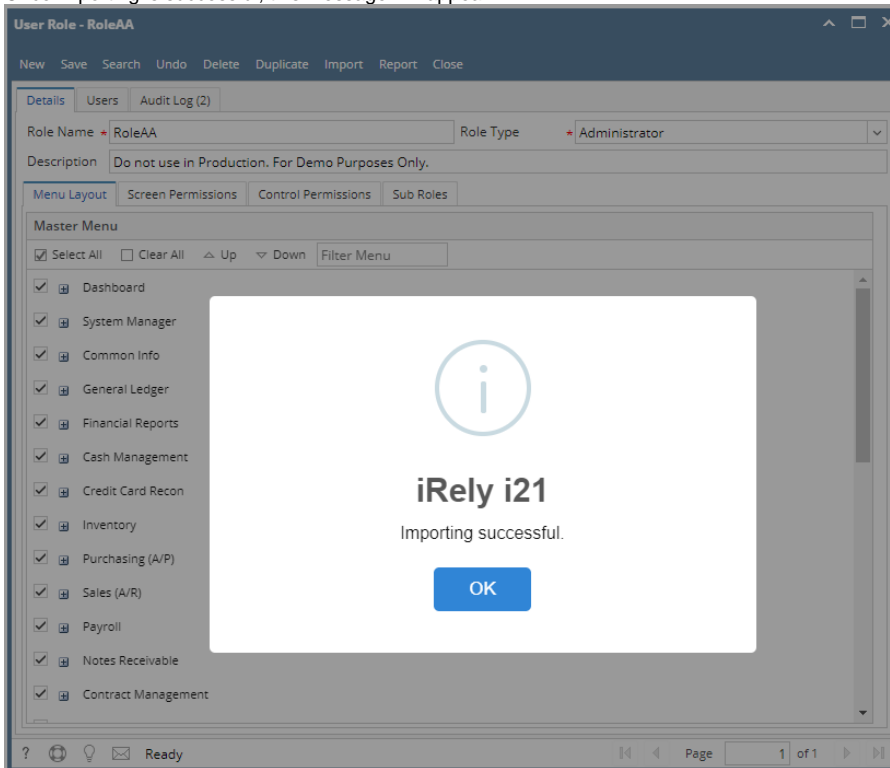
4. Click the **Import** toolbar button



5. Select the CSV file from the file browser
6. A warning message will appear, to proceed with importing click the **Yes** button



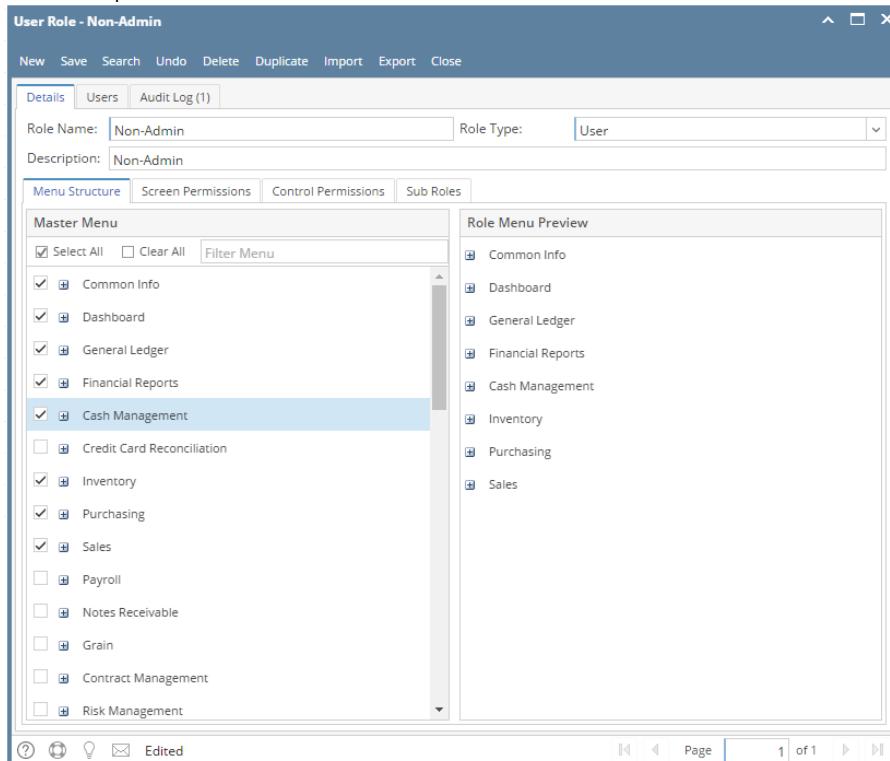
7. Once importing is successful, this message will appear



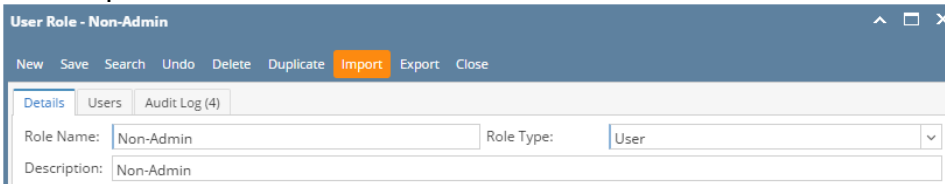
i Previous Menu structure, Description and Role Type will be replaced with the imported user role.

Here are the steps to Import a User Role:

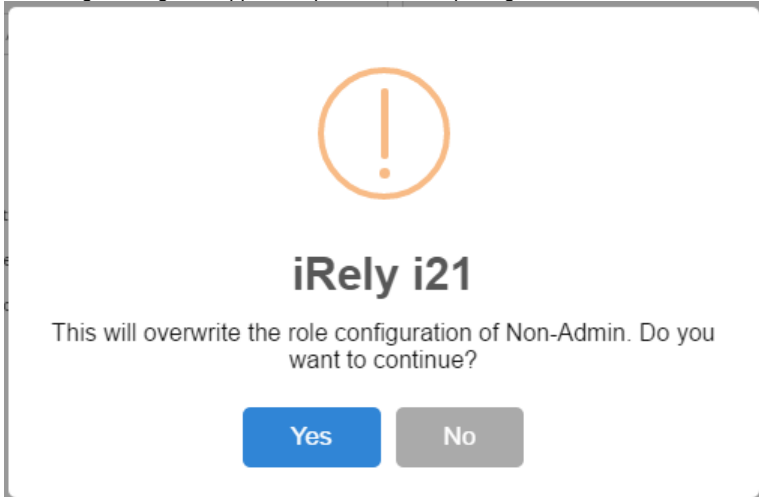
1. Log in as **Admin user**
2. On user's menu panel, go to **System Manager** folder then click **User Roles**
3. Select and open one user role



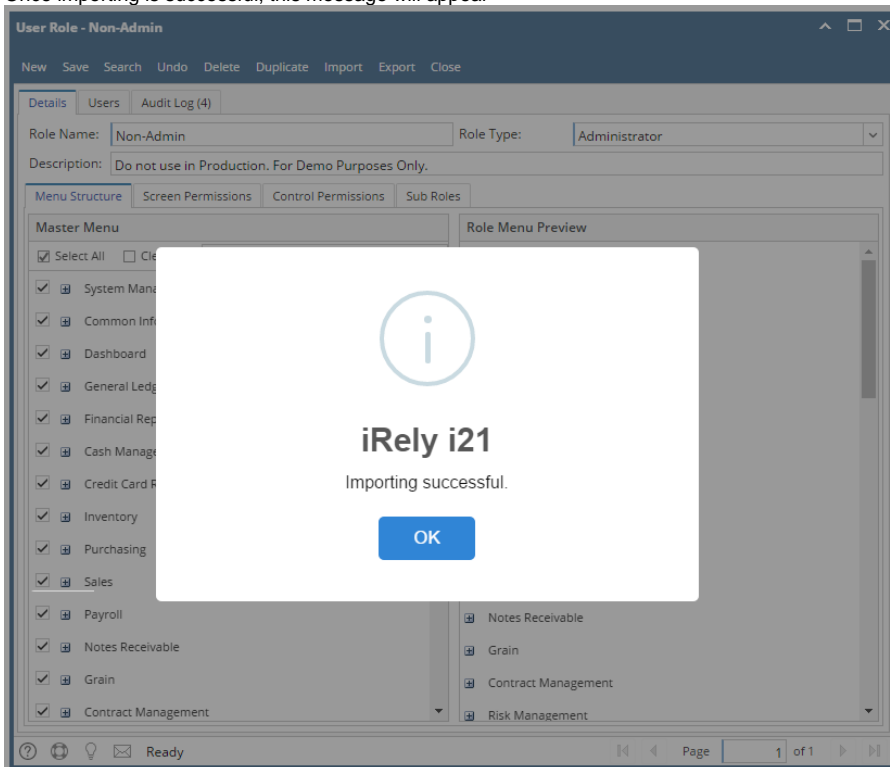
- Click the **Import** toolbar button



- Select the CSV file from the file browser
- A warning message will appear, to proceed with importing click the **Yes** button



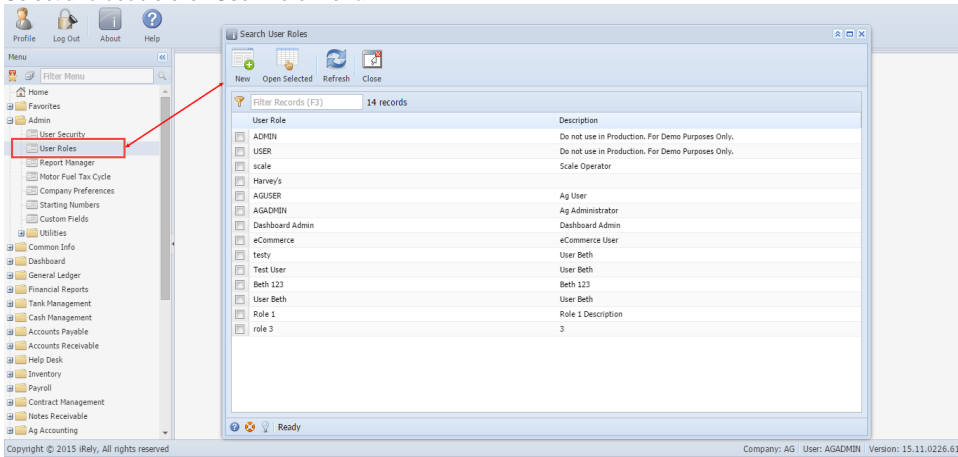
- Once importing is successful, this message will appear



i Previous Menu structure, Description and Role Type will be replaced with the imported user role.
Here are the steps to Import a User Role:

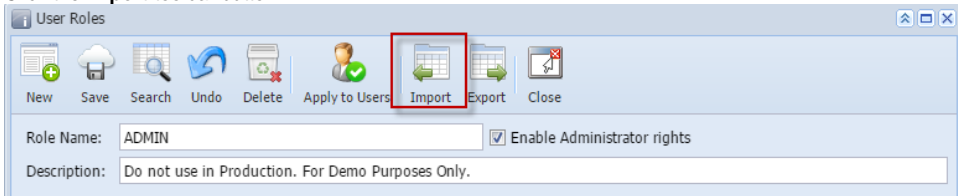
- Log in as Admin user
- On the user's menu panel, Select **Admin folder**

3. Select and double click **User Role** menu



4. Select one user role or Create New User Role type

5. Click the **Import** toolbar button



6. Select the CSV file from the file browser

i Previous Menu structure will be replaced with the imported user role