

How to Delete Earning Type

- 1. Click **Earning Types** from **Payroll** module.
- 2. Select earning type from the grid.
- 3. Click **Open** toolbar button.

Tax Type

NewOpenRefreshExportClose

Filter Records (F3)12 records (1 selected)

Tax Type	Description	Calculation Type	Amount/Percent	Limit	Paid By
<input type="checkbox"/> FIT	Federal Income Tax	USA Federal Tax	0.00	0.00	Employee
<input type="checkbox"/> FICA SS Employee	FICA Social Security Employee	USA Social Security	0.00	0.00	Employee
<input type="checkbox"/> FICA SS Company	FICA Social Security Company	USA Social Security	0.00	0.00	Company
<input type="checkbox"/> FICA MED Employee	FICA Medicare Employee	USA Medicare	0.00	0.00	Employee
<input type="checkbox"/> FICA MED Company	FICA Medicare Company	USA Medicare	0.00	0.00	Company
<input type="checkbox"/> FUTA	Federal Unemployment Tax	USA FUTA	0.00	7,000.00	Company
<input type="checkbox"/> SUTA	State Unemployment Tax	USA SUTA	0.53	8,000.00	Company
<input type="checkbox"/> MI-State Tax	Michigan State Tax	USA State	0.00	0.00	Employee
<input type="checkbox"/> MI-Local	Michigan City Tax	USA Local	0.00	0.00	Employee
<input type="checkbox"/> CA State Tax	California State Tax	USA State	0.00	0.00	Employee
<input type="checkbox"/> SDI-CA	State Disability Insurance - CA	USA State Disability	0.00	0.00	Employee
<input checked="" type="checkbox"/> My Tax	New Tax Types	Fixed Amount	5.00	10.00	Employee

- 4. Click **Delete** toolbar button.

Earning Types - EART

NewSaveSearchDeleteUndoUpdate EmployeesClose

Details

Earning ID: EARTCalculation Type: Fixed Amount

Description: Earning Types

Amount: 1.00Account ID: 50000-0000-000

W2 Code:Sort Order: 0

Earning Taxes

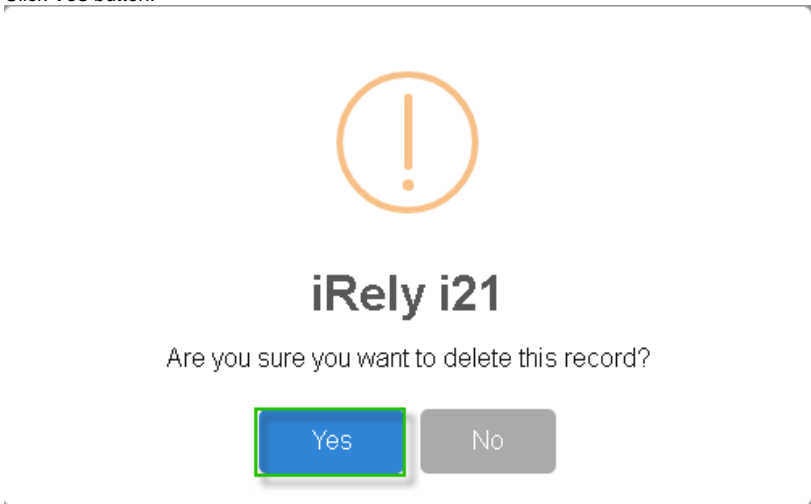
+ Quick AddX RemoveFilter Records (F3)

Tax ID	Description	Type	Paid By
<input type="checkbox"/> SDI-CA	State Disability Insurance - CA	USA State Disability	Employ...
<input type="checkbox"/> CA State Tax	California State Tax	USA State	Employ...
<input type="checkbox"/> MI-Local	Michigan City Tax	USA Local	Employ...
<input type="checkbox"/> MI-State Tax	Michigan State Tax	USA State	Employ...
<input type="checkbox"/> SUTA	State Unemployment Tax	USA SUTA	Compa...
<input type="checkbox"/> FUTA	Federal Unemployment Tax	USA FUTA	Compa...

Ready

Page 1 of 1

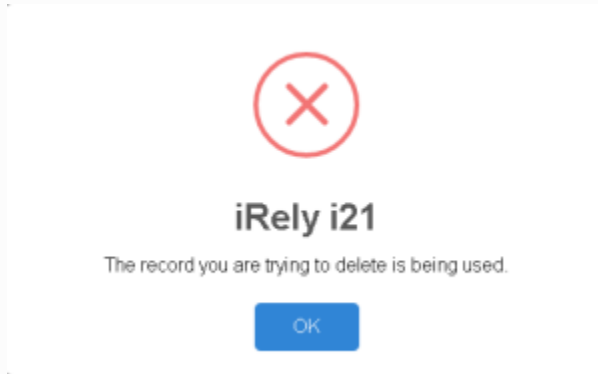
- 5. A confirmation message will be displayed.
- 6. Click **Yes** button.



- 7. Deleted earning type will be removed from the grid.



If the earning type is associated to any employee, this message will be shown:



1. Click **Earning Types** from **Payroll** module.
2. Select earning type from the grid.
3. Click **Open** toolbar button.

Tax Type						
New Open Refresh Export Close						
Filter Records (F3) 12 records (1 selected)						
Tax Type	Description	Calculation Type	Amount/Percent	Limit	Paid By	
<input type="checkbox"/> FIT	Federal Income Tax	USA Federal Tax	0.00	0.00	Employee	
<input type="checkbox"/> FICA SS Employee	FICA Social Security Employee	USA Social Security	0.00	0.00	Employee	
<input type="checkbox"/> FICA SS Company	FICA Social Security Company	USA Social Security	0.00	0.00	Company	
<input type="checkbox"/> FICA MED Employee	FICA Medicare Employee	USA Medicare	0.00	0.00	Employee	
<input type="checkbox"/> FICA MED Company	FICA Medicare Company	USA Medicare	0.00	0.00	Company	
<input type="checkbox"/> FUTA	Federal Unemployment Tax	USA FUTA	0.80	7,000.00	Company	
<input type="checkbox"/> SUTA	State Unemployment Tax	USA SUTA	0.53	8,000.00	Company	
<input type="checkbox"/> MI-State Tax	Michigan State Tax	USA State	0.00	0.00	Employee	
<input type="checkbox"/> MI-Local	Michigan City Tax	USA Local	0.00	0.00	Employee	
<input type="checkbox"/> CA State Tax	California State Tax	USA State	0.00	0.00	Employee	
<input type="checkbox"/> SDI-CA	State Disability Insurance - CA	USA State Disability	0.00	0.00	Employee	
<input checked="" type="checkbox"/> My Tax	New Tax Types	Fixed Amount	5.00	10.00	Employee	

4. Click **Delete** toolbar button.

Earning Types - EART

New Save Search **Delete** Undo Update Employees Close

Details

Earning ID: EART Calculation Type: Fixed Amount

Description: Earning Types

Amount: 1.00 Account ID: 50000-0000-000

W2 Code: Sort Order: 0

Earning Taxes

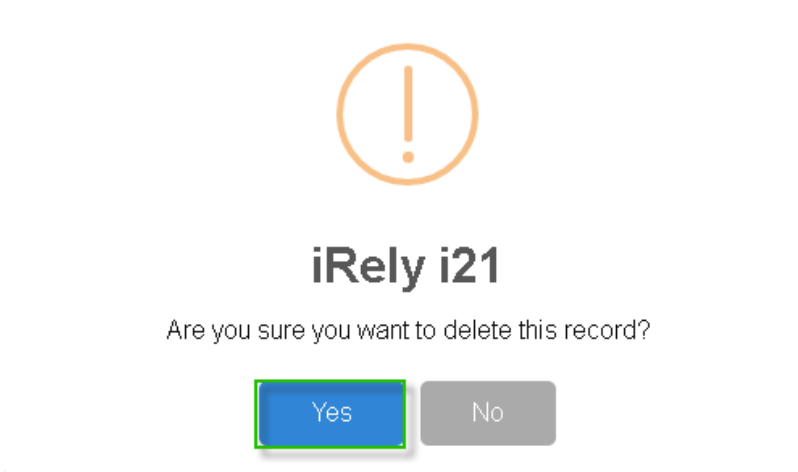
+ Quick Add X Remove Filter Records (F3)

Tax ID	Description	Type	Paid By
<input type="checkbox"/> SDI-CA	State Disability Insurance - CA	USA State Disability	Employ...
<input type="checkbox"/> CA State Tax	California State Tax	USA State	Employ...
<input type="checkbox"/> MI-Local	Michigan City Tax	USA Local	Employ...
<input type="checkbox"/> MI-State Tax	Michigan State Tax	USA State	Employ...
<input type="checkbox"/> SUTA	State Unemployment Tax	USA SUTA	Compa...
<input type="checkbox"/> FUTA	Federal Unemployment Tax	USA FUTA	Compa...

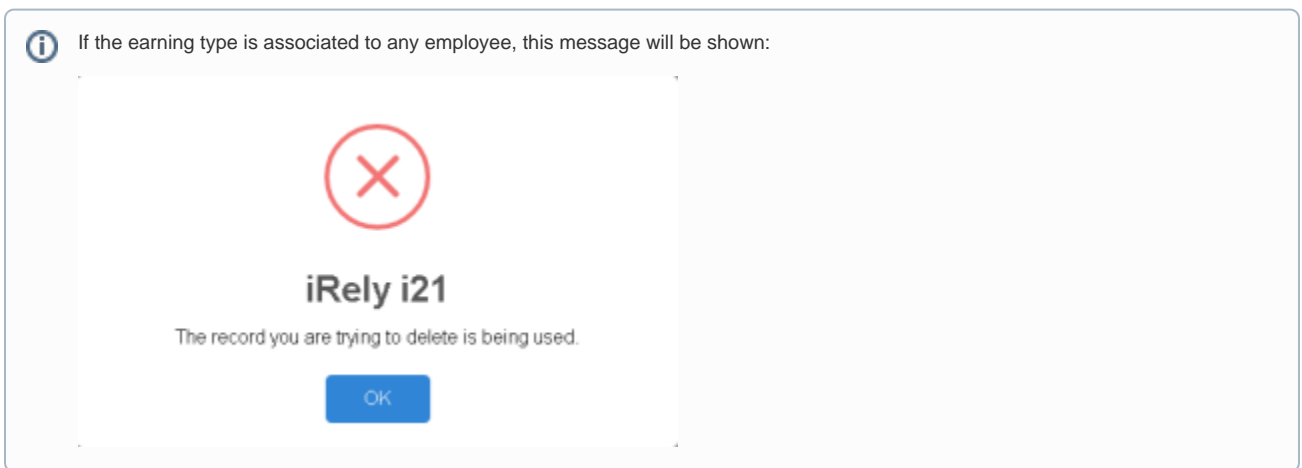
Ready Page 1 of 1

5. A confirmation message will be displayed.

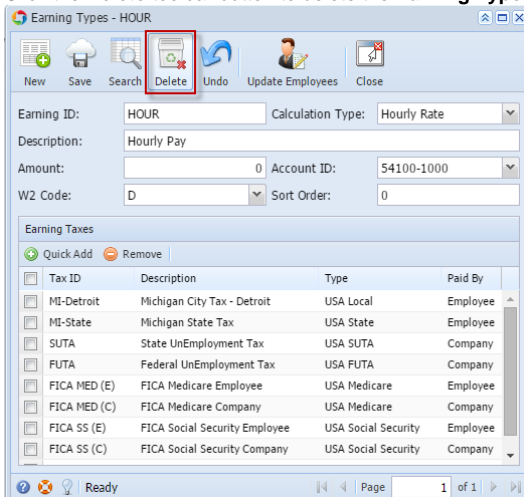
6. Click **Yes** button.



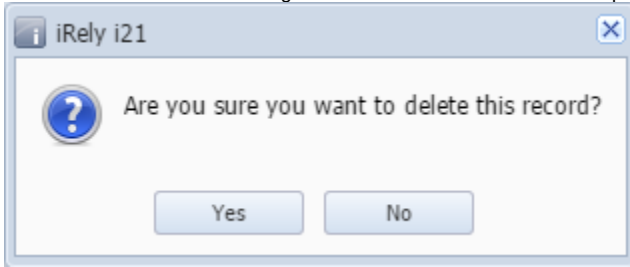
7. Deleted earning type will be removed from the grid.




1. Click the **Delete** toolbar button to delete the **Earning Type** record.



2. This delete confirmation message will be shown. Click **Yes** button to proceed with deleting the record.



 When record you are trying to delete is being used by another record, this message will be shown.

