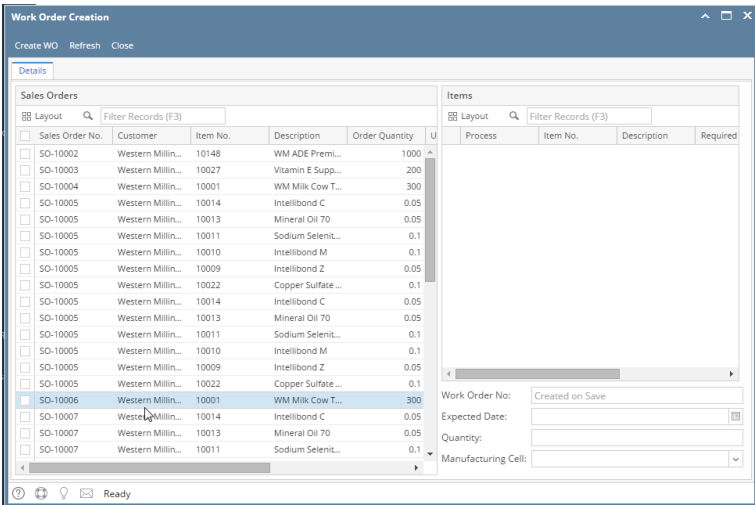


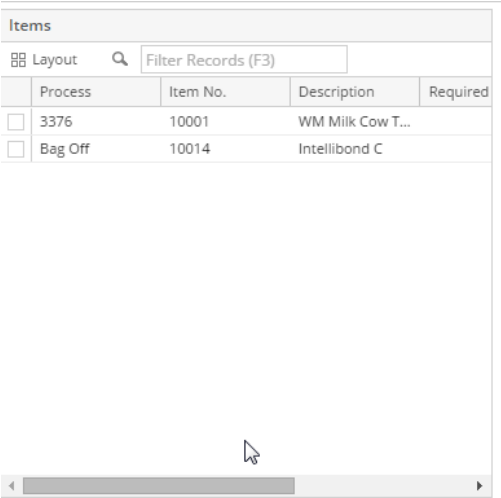
Work Order Planning

Overview

System allows to create a Blend Work orders from the Sales Orders, Created Sales orders are displayed in the Work Order Planning screen.



- 1. Work Order Planning screen has following sections
 - a. Sales Orders
 - b. Items
 - c. Controls
- 2. Sales Orders section should display all the created sales, double clicking on the existing Sales Orders. system should populate the Items if recipe is available.



- 3. Double clicking on the Items, following controls are filled
 - a. Work Order No.
 - b. Expected Date.
 - c. Quantity
- 4. Select the Manufacturing Cell
- 5. Click on Create WO

Note: Created Work Orders should be displayed in the Kit Manager (if Kitting is enabled else Work order should be available in Blend Production)