

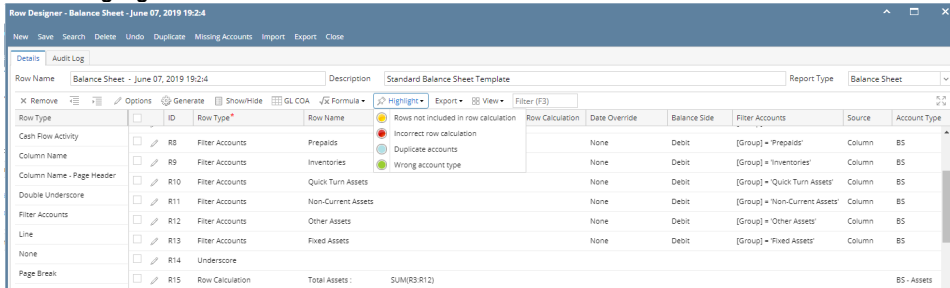
# How Highlight button works

The following will guide you on how Highlight button works.

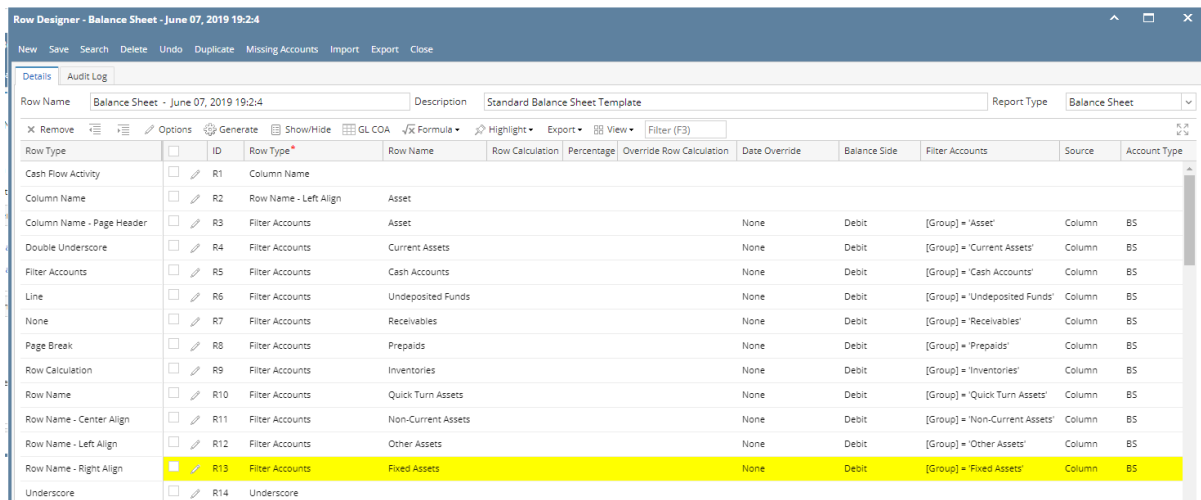
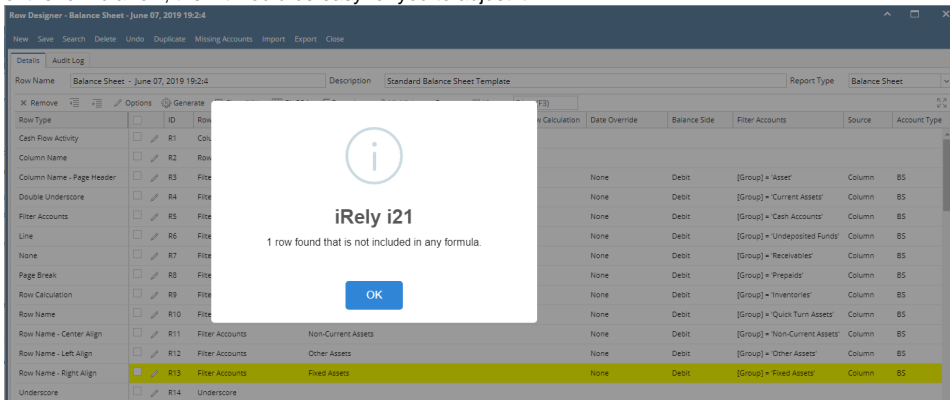
## Rows not included in row calculation

This feature will help you identify the row/s that are not part of any formula, thus making it easy for you to add or adjust your formula to include it. This saves you time to review each and every formula row you have just to know which among your formula row is missing with what row. See example below.

1. Open a Row Designer record.
2. Click on **Highlight** button and select **Rows not included in row calculation**.



3. Scroll down to see the row/s highlighted in yellow. These rows are not being used in any formula. Now that you know that the said row is not part of the formula row, then it would be easy for you to adjust it.

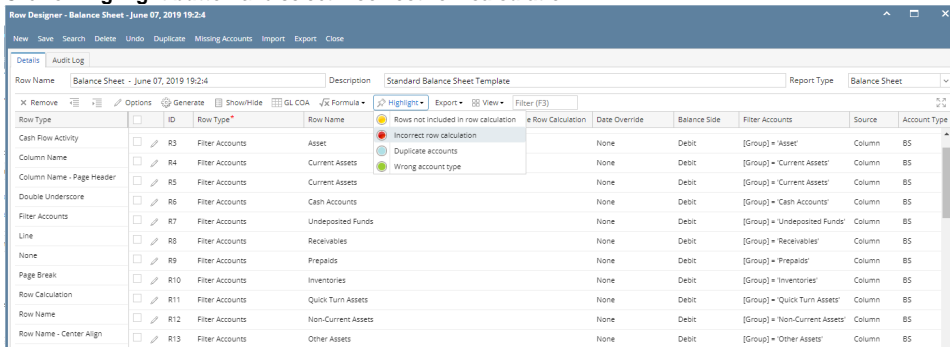


## Incorrect row calculation

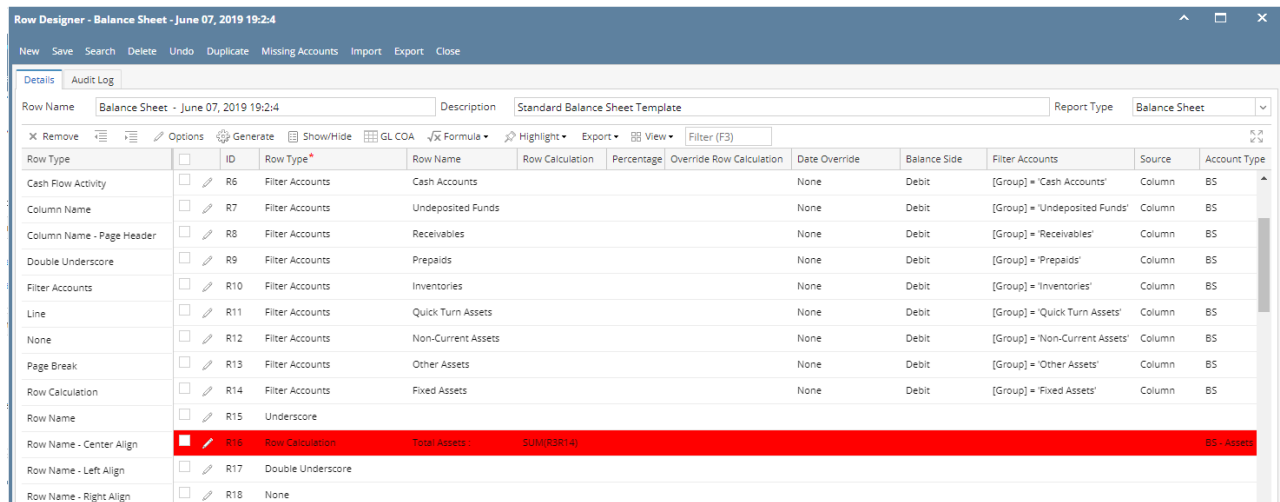
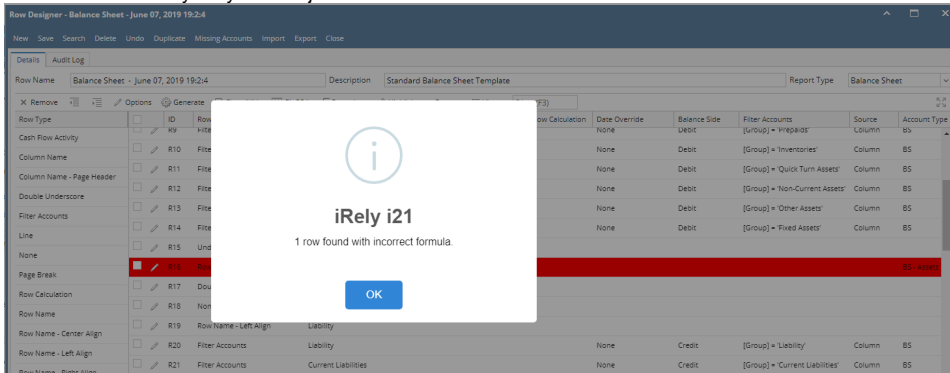
This feature will help you identify the row/s that have erroneous formula, thus making it easy for you to adjust/correct it. This saves you time to review each and every formula row you have just to know which among your formula row is with error. See example below.

1. Open a Row Designer record.

2. Click on **Highlight** button and select **Incorrect row calculation**.



3. Scroll down to see the row/s highlighted in red. These rows have incorrect formula. Now that you know that the said row has incorrect formula, then it would be easy for you to adjust it.



In this example, it showed that the formula is incorrect which it should be SUM(R3:R14)

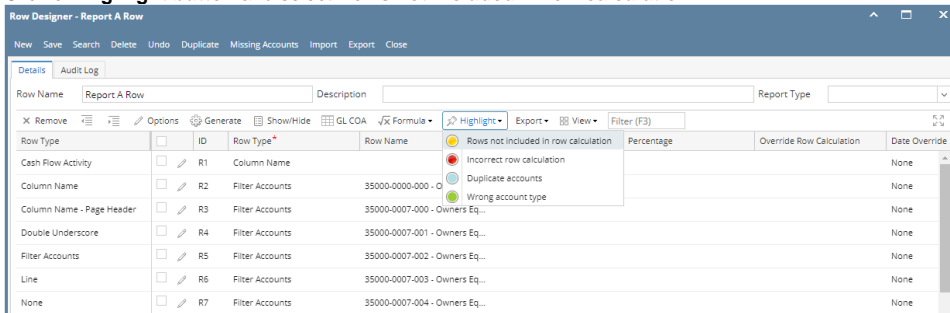
The following will guide you on how Highlight button works.

### Rows not included in row calculation

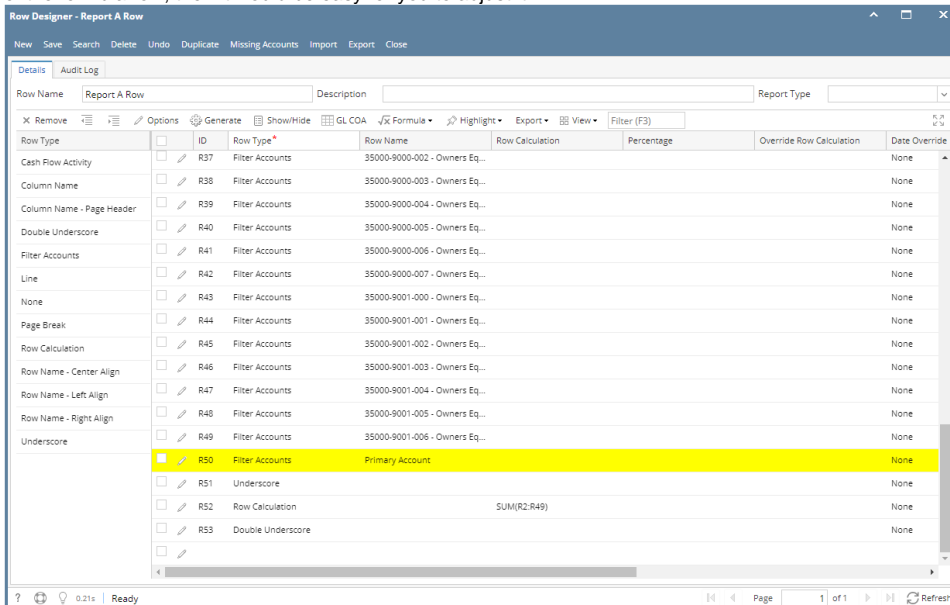
This feature will help you identify the row/s that are not part of any formula, thus making it easy for you to add or adjust your formula to include it. This saves you time to review each and every formula row you have just to know which among your formula row is missing with what row. See example below.

1. Open a Row Designer record.

- Click on **Highlight button** and select **Rows not included in row calculation**.



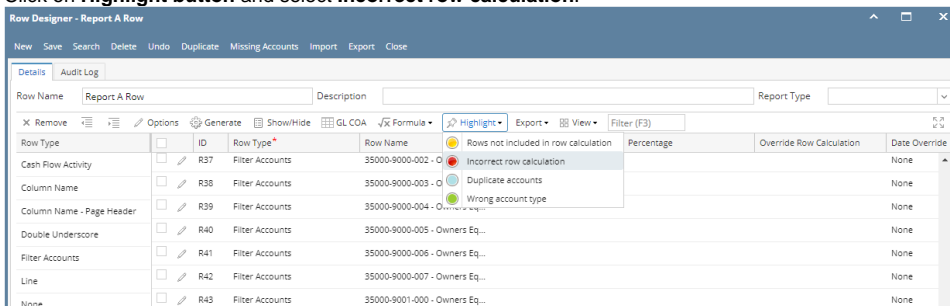
- Scroll down to see the row/s highlighted in yellow. These rows are not being used in any formula. Now that you know that the said row is not part of the formula row, then it would be easy for you to adjust it.



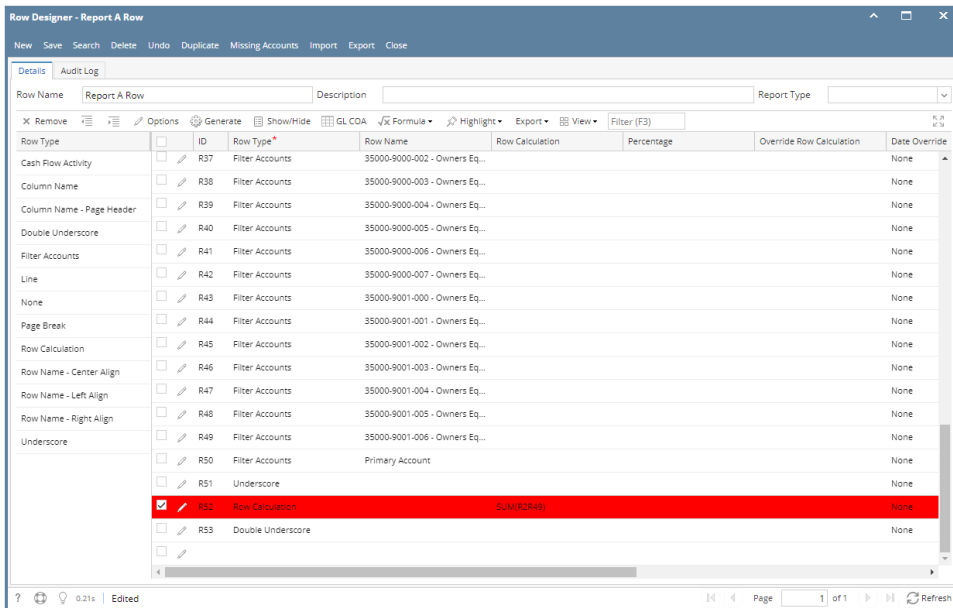
## Incorrect row calculation

This feature will help you identify the row/s that have erroneous formula, thus making it easy for you to adjust/correct it. This saves you time to review each and every formula row you have just to know which among your formula row is with error. See example below.

- Open a Row Designer record.
- Click on **Highlight button** and select **Incorrect row calculation**.



- Scroll down to see the row/s highlighted in red. These rows have incorrect formula. Now that you know that the said row has incorrect formula, then it would be easy for you to adjust it.



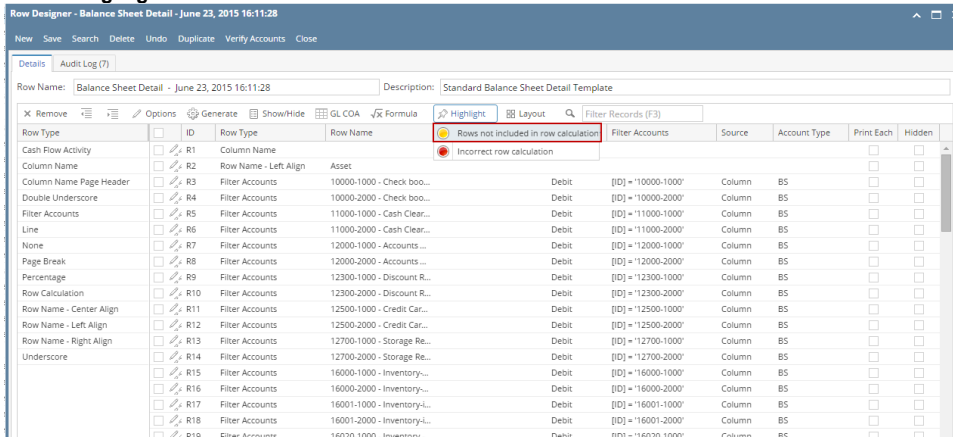
In this example, it showed that one of the operand in the formula is pointing to an underscore row. See the second Row Id highlighted with yellow.

The following will guide you on how Highlight button works.

### Rows not included in row calculation

This feature will help you identify the row/s that are not part of any formula, thus making it easy for you to add or adjust your formula to include it. This saves you time to review each and every formula row you have just to know which among your formula row is missing with what row. See example below.

1. Open a Row Designer record.
2. Click on **Highlight** button and select **Rows not included in row calculation**.



3. Scroll down to see the row/s highlighted in yellow. These rows are not being used in any formula. Now that you know that the said row is not part of the formula row, then it would be easy for you to adjust it.

Row Designer - Balance Sheet Detail - June 23, 2015 16:11:28										
New Save Search Delete Undo Duplicate Verify Accounts Close										
Details Audit Log (7)										
Row Name: Balance Sheet Detail - June 23, 2015 16:11:28				Description: Standard Balance Sheet Detail Template						
<input checked="" type="checkbox"/>	<input checked="" type="checkbox"/>	<input checked="" type="checkbox"/>	<input checked="" type="checkbox"/>	<input checked="" type="checkbox"/>	<input checked="" type="checkbox"/>	<input checked="" type="checkbox"/>	<input checked="" type="checkbox"/>	<input checked="" type="checkbox"/>	<input checked="" type="checkbox"/>	<input checked="" type="checkbox"/>
Row Type	ID	Row Type	Row Name	Row Calculation	Balance Side	Filter Accounts	Source	Account Type	Print Each	Hidden
Cash Flow Activity	R14	Filter Accounts	16000-1000 - Inventory...		Debit	[ID] = '16000-1000'	Column	BS		
Column Name	R15	Filter Accounts	16000-2000 - Inventory...		Debit	[ID] = '16000-2000'	Column	BS		
Column Name Page Header	R16	Filter Accounts	16001-1000 - Inventory...		Debit	[ID] = '16001-1000'	Column	BS		
Double Underscore	R17	Filter Accounts	16001-2000 - Inventory...		Debit	[ID] = '16001-2000'	Column	BS		
Filter Accounts	R18	Filter Accounts	16020-1000 - Inventory...		Debit	[ID] = '16020-1000'	Column	BS		
Line	R19	Filter Accounts	16020-2000 - Inventory...		Debit	[ID] = '16020-2000'	Column	BS		
None	R20	Filter Accounts	16021-1000 - Inventory...		Debit	[ID] = '16021-1000'	Column	BS		
Page Break	R21	Filter Accounts	16021-2000 - Inventory...		Debit	[ID] = '16021-2000'	Column	BS		
Percentage	R22	Filter Accounts	16100-1000 - Inventory...		Debit	[ID] = '16100-1000'	Column	BS		
Row Calculation	R23	Filter Accounts	16100-2000 - Inventory...		Debit	[ID] = '16100-2000'	Column	BS		
Row Name - Center Align	R24	Filter Accounts	16200-1000 - Inventory...		Debit	[ID] = '16200-1000'	Column	BS		
Row Name - Left Align	R25	Filter Accounts	16200-2000 - Inventory...		Debit	[ID] = '16200-2000'	Column	BS		
Row Name - Right Align	R26	Filter Accounts	16200-2000 - Inventory...		Debit	[ID] = '16200-2000'	Column	BS		
Underscore	R27	Row Calculation	Total Assets :	R3+R4+R5+R6+R7+R8+R...						
Double Underscore	R28	None								
None	R29	Row Name - Left Align	Liability							
Filter Accounts	R30	Filter Accounts	20000-1000 - Accounts...		Credit	[ID] = '20000-1000'	Column	BS		
Line	R31	Filter Accounts	20000-2000 - Accounts...		Credit	[ID] = '20000-2000'	Column	BS		
None	R32	Filter Accounts	21000-1000 - AP Clearin...		Credit	[ID] = '21000-1000'	Column	BS		
Page Break	R33	Filter Accounts	21000-2000 - AP Clearin...		Credit	[ID] = '21000-2000'	Column	BS		
Percentage	R34	Filter Accounts	22000-1000 - Inspection...		Credit	[ID] = '22000-1000'	Column	BS		
Row Calculation	R35	Filter Accounts								
Row Name - Center Align	R36	Filter Accounts								
Row Name - Left Align	R37	Filter Accounts								
Row Name - Right Align	R38	Filter Accounts								
Underscore	R39	Filter Accounts								

### Incorrect row calculation

This feature will help you identify the row/s that have erroneous formula, thus making it easy for you to adjust/correct it. This saves you time to review each and every formula row you have just to know which among your formula row is with error. See example below.

1. Open a Row Designer record.
2. Click on **Highlight** button and select **Incorrect row calculation**.

Row Designer - Balance Sheet Detail - June 23, 2015 16:11:28										
New Save Search Delete Undo Duplicate Verify Accounts Close										
Details Audit Log (7)										
Row Name: Balance Sheet Detail - June 23, 2015 16:11:28				Description: Standard Balance Sheet Detail Template						
<input checked="" type="checkbox"/>	<input checked="" type="checkbox"/>	<input checked="" type="checkbox"/>	<input checked="" type="checkbox"/>	<input checked="" type="checkbox"/>	<input checked="" type="checkbox"/>	<input checked="" type="checkbox"/>	<input checked="" type="checkbox"/>	<input checked="" type="checkbox"/>	<input checked="" type="checkbox"/>	<input checked="" type="checkbox"/>
Row Type	ID	Row Type	Row Name	Row Calculation	Balance Side	Filter Accounts	Source	Account Type	Print Each	Hidden
Cash Flow Activity	R16	Filter Accounts	29100-1000 - UP Liabili...			[ID] = '29100-1000'	Column	BS		
Column Name	R17	Underscore								
Column Name Page Header	R18	Row Calculation	Total Liabilities :	R32+R33+R34+R35+R36...						
Double Underscore	R19	None								
Filter Accounts	R20	Row Name - Left Align	Equity							
Line	R21	Filter Accounts	35000-1000 - Owners Eq...		Credit	[ID] = '35000-1000'	Column	BS		
None	R22	Filter Accounts	35000-2000 - Owners Eq...		Credit	[ID] = '35000-2000'	Column	BS		
Page Break	R23	Filter Accounts	39000-1000 - Retained E...		Credit	[ID] = '39000-1000'	Column	BS		
Percentage	R24	Filter Accounts	39000-2000 - Retained E...		Credit	[ID] = '39000-2000'	Column	BS		
Row Calculation	R25	Underscore								
Row Name - Center Align	R26	Row Calculation	Total Equity :	R81+R82+R83+R84						
Row Name - Left Align	R27	None								
Row Name - Right Align	R28	Filter Accounts	Revenue		Credit	[Type] = 'Revenue'	IS			
Underscore	R29	Filter Accounts	Expense		Debit	[Type] = 'Expense'	IS			
None	R30	None								
Filter Accounts	R31	Row Calculation	Current Year Earning :	R88-R89						
Line	R32	Underscore								
None	R33	Row Calculation	Total Equity :	R86+R91						
Page Break	R34	Underscore								
Percentage	R35	Row Calculation	Total Liabilities and Equi...	R78+R92						
Row Calculation	R36	Double Underscore								

3. Scroll down to see the row/s highlighted in red. These rows have incorrect formula. Now that you know that the said row has incorrect formula, then it would be easy for you to adjust it.

