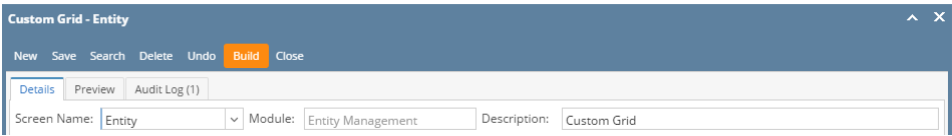


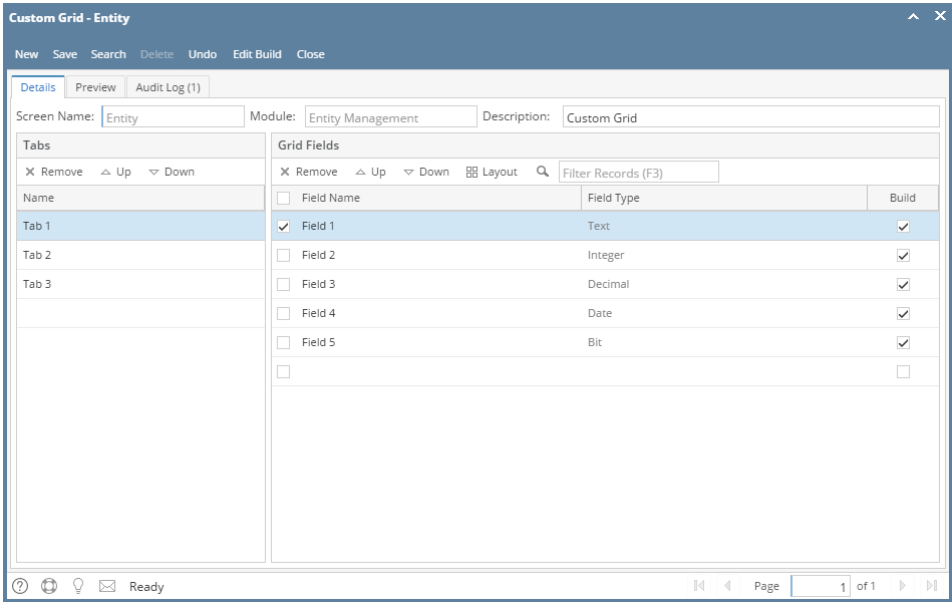
How to Build the Custom Grid

When a Custom Grid is built, it will be available on the selected screen/module.

- 1. Log in as **Admin user**
- 2. On user's menu panel, go to **System Manager** folder then click **Custom Grid**.
- 3. From **Search Custom Grid** screen, select an existing record.
- 4. Click **Build** toolbar button to implement the created field. Check implementation to selected screen/module.



- 5. Once the Grid has been built, Build column check box will be marked, meaning these controls have been built.



Once the record is built, **Build** toolbar button will become **Edit Build**. Fields that cannot be edited will be grayed out.

This is an example of a Custom Grid in a screen:

