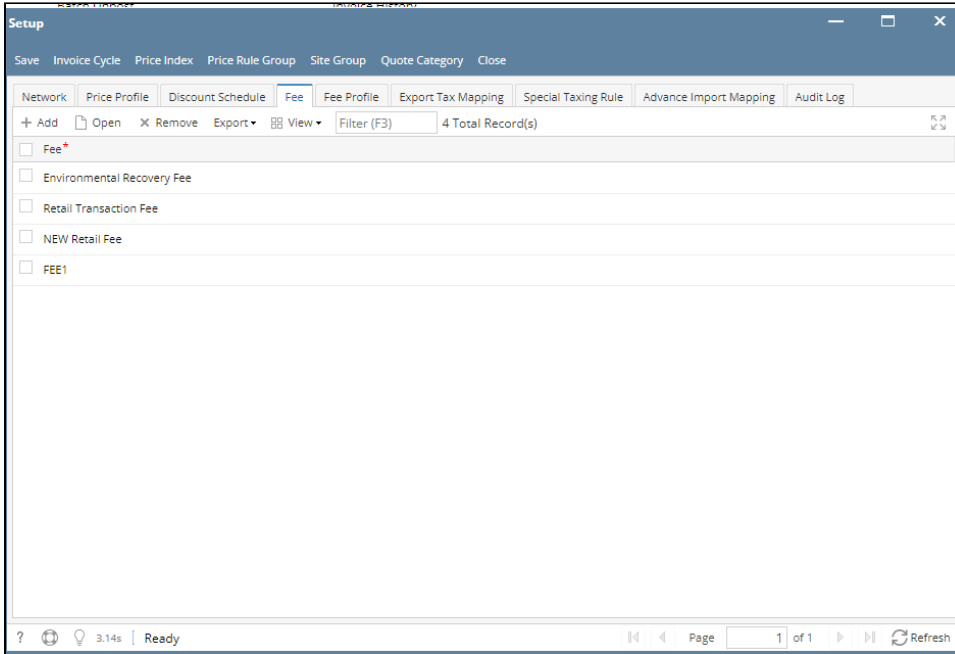


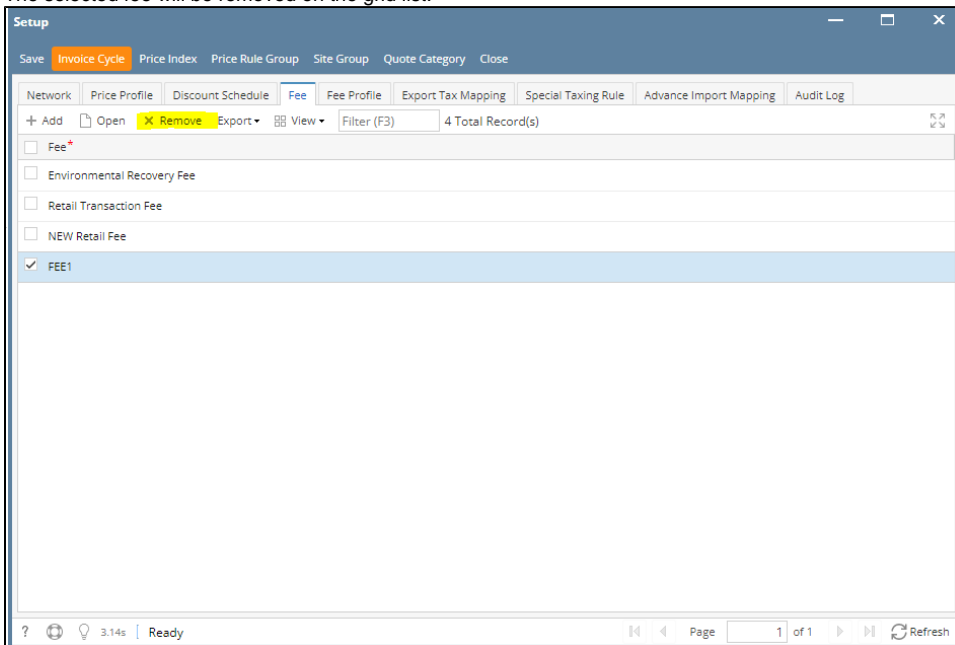
# How to Delete a Fee

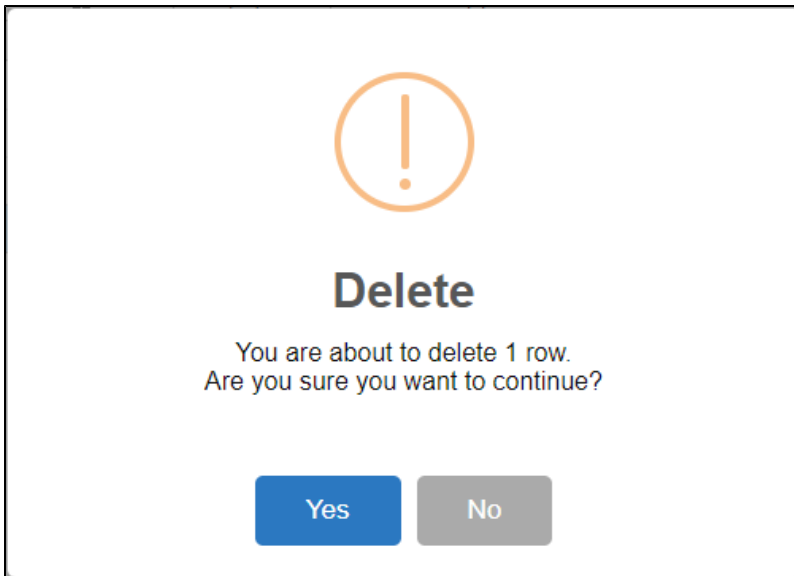
## Delete a Fee via Remove grid button

1. From **Card Fueling** module, click **Setup**. The **Setup** screen will be displayed.  
Click **Fee** tab screen.



2. Select a **Fee** to be deleted. You can choose multiple fees.
3. Click **Remove** grid button. Delete message confirmation will prompt, click **Yes** button.  
The selected fee will be removed on the grid list.

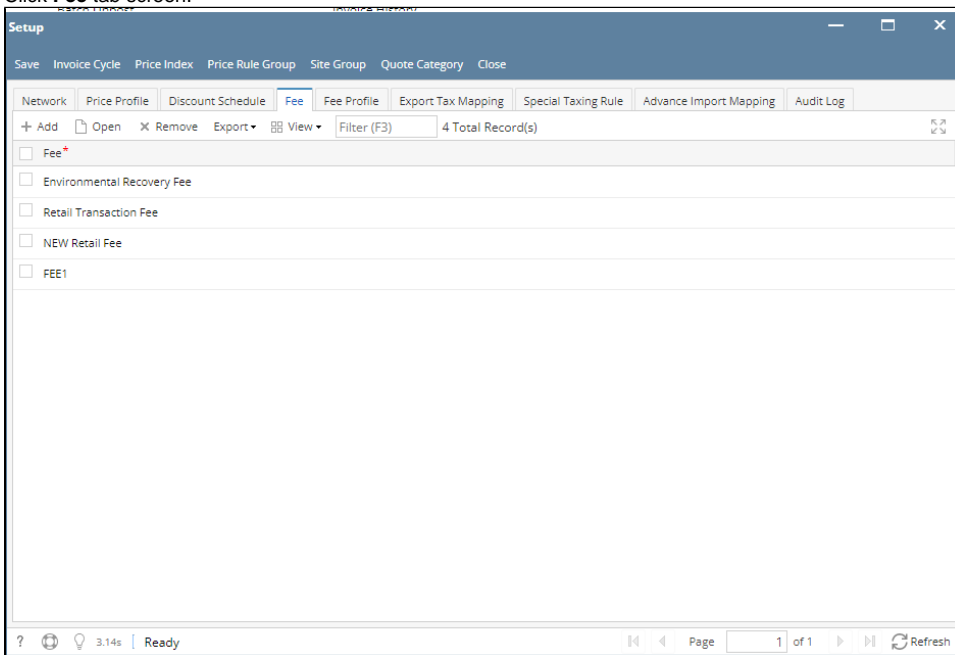




4. Click **Save** toolbar button.

#### **Delete a Fee via Delete toolbar button**

1. From **Card Fueling** module, click Setup. The **Setup** screen will be displayed.  
Click **Fee** tab screen.



2. Select the desired fee to be deleted then click **Open** toolbar button. The **Fee** detail screen will be displayed.

Setup

Save Invoice Cycle Price Index Price Rule Group Site Group Quote Category Close

Network Price Profile Discount Schedule **Fee** Fee Profile Export Tax Mapping Special Taxing Rule Advance Import Mapping Audit Log

+ Add Open X Remove Export View Filter (F3) 4 Total Record(s)

<input type="checkbox"/>	Fee*
<input type="checkbox"/>	Environmental Recovery Fee
<input type="checkbox"/>	Retail Transaction Fee
<input type="checkbox"/>	NEW Retail Fee
<input checked="" type="checkbox"/>	FEE1

? 3.14s Ready Page 1 of 1 Refresh

3. Click **Delete** toolbar button. Delete confirmation message will prompt, click **Yes** button. The **Fee** detail screen will be closed.

Fee - FEE1

New Save **Delete** Search Undo Close

Details Audit Log

Fee ID \* FEE1

Description FEE Test

Calculation Type \* Transaction

Tiered Discount Schedule

Calc Frequency \* Billing Cycle

**Transaction Type**

Ext. Remote	<input checked="" type="checkbox"/>
Remote	<input checked="" type="checkbox"/>
Local	<input checked="" type="checkbox"/>
Foreign	<input checked="" type="checkbox"/>

Network ID

Card Type

Minimum Threshold 0

Maximum Threshold 0

Rate 0.000000

? 0.94s Ready Page 1 of 1 Refresh



## Delete

You are about to delete 1 row.  
Are you sure you want to continue?

Yes

No

*Note: A Fee cannot be deleted when assigned to any Fee Profile.*