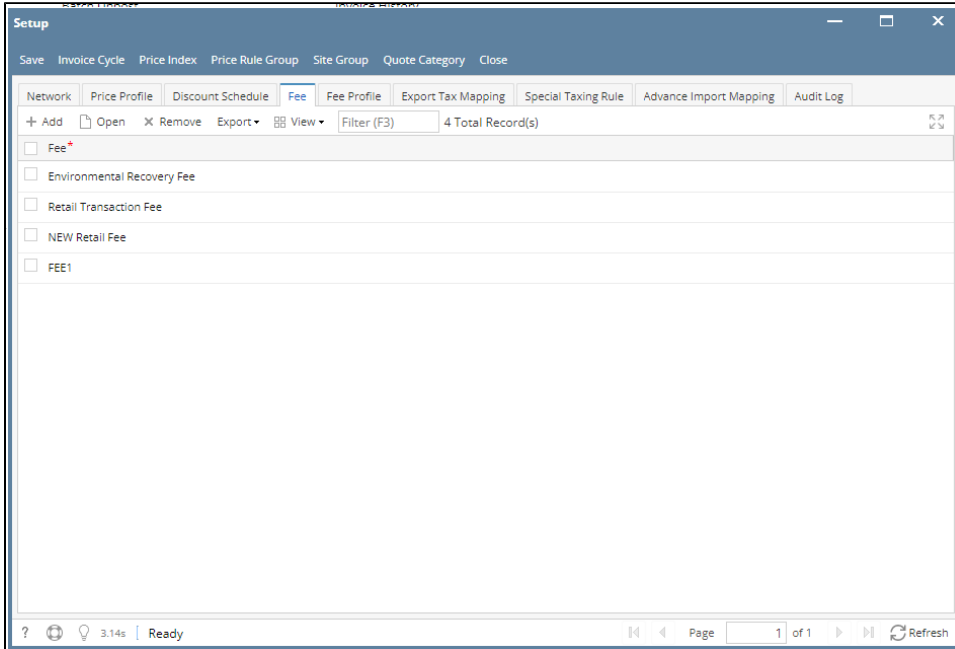
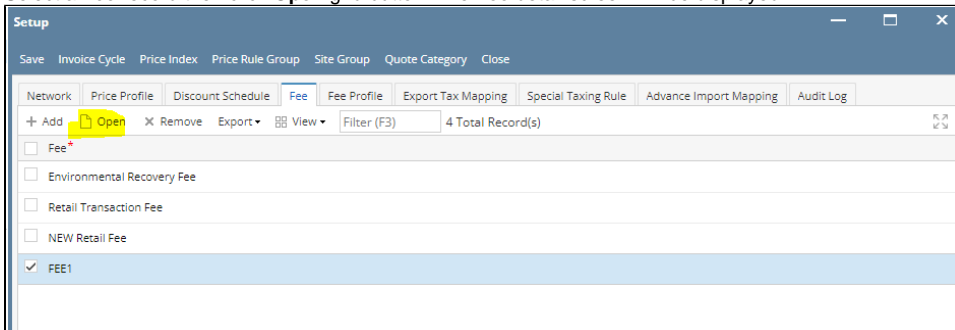


How to Edit a Fee

1. From **Card Fueling** module, click **Setup**. The **Setup** screen will be displayed.
Click **Fee** tab screen.



2. Select a **Fee** record then click **Open** grid button. The **Fee** detail screen will be displayed.



Fee - FEE1

New Save Delete Search Undo Close

Details Audit Log

Fee ID * FEE1

Description FEE Test

Calculation Type * Transaction

Tiered Discount Schedule

Calc Frequency * Billing Cycle

Transaction Type

Ext. Remote ☒

Remote ☒

Local ☒

Foreign ☒

Network ID

Card Type

Minimum Threshold 0

Maximum Threshold 0

Rate 0.000000

?

0.72s

Ready

Page

1 of 1

Refresh

3. Modify any of the **Fee** fields and/or columns. Click **Save** toolbar button and the changes will be saved.