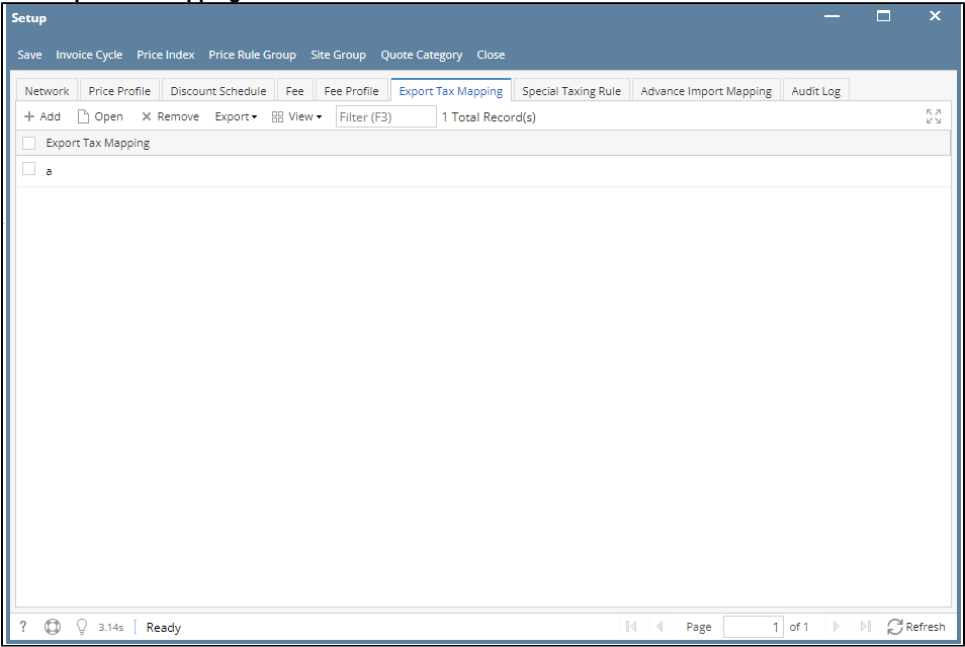
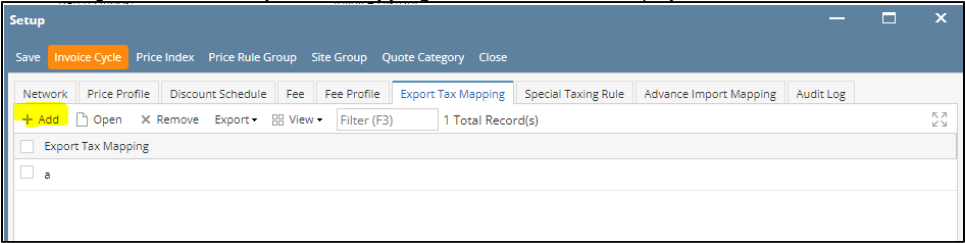


How to Create an Export Mapping

- 1. From **Card Fueling** module, click **Setup**. The **Setup** screen will be displayed. Click **Export Tax Mapping** tab screen.



- 2. Click **Add** grid button. The **Export Tax Mapping** detail screen will be displayed.



Export Tax Mapping -

New Save Delete Search Undo Close

Details Audit Log

Description

File Field Mapping

Remove Export View Filter (F3) 0 Total Record(s)

Record Marker	Tax Class	Position	Length	Format
<input type="checkbox"/>		0	0	

? 1.55s Ready Page 1 of 1 Refresh

3. Enter/Select the following required fields: **Description**, **File Field Mapping** (Setup on System Manager > File Field Mapping). Enter/Select **Tax Class** on the grid to be included on the **Export Tax Mapping**.

Export Tax Mapping - EXPORT TAX MAPPING 1

New Save Delete Search Undo Close

Details Audit Log

Description

File Field Mapping

Remove Export View Filter (F3) 0 Total Record(s)

Record Marker	Tax Class	Position	Length	Format	
<input checked="" type="checkbox"/>	TAX!	State Sales Tax - TM	1	0	YYYYMMDD
<input type="checkbox"/>		0	0		

? 1.55s Edited Page 1 of 1 Refresh

4. Click **Save** toolbar button. The **Export Tax Mapping** name will append on the screen title. Then click the **Close** toolbar button or **X** button.

Export Tax Mapping - EXPORT TAX MAPPING 1

New **Save** Delete Search Undo Close

Details | Audit Log

Description: EXPORT TAX MAPPING 1

File Field Mapping: * CFN

☐ Remove
 Export ▾
 View ▾
 Filter (F3)
 0 Total Record(s)

<input type="checkbox"/> Record Marker	Tax Class	Position	Length	Format
<input checked="" type="checkbox"/> TAX!	State Sales Tax - TM	1	0	YYYYMMDD
<input type="checkbox"/>		0	0	

?
 ?
 1.55s
 Saved
 Page 1 of 1
 Refresh

5. In the **Export Tax Mapping** tab screen, the created **Export Tax Mapping** will be listed.

Setup

Save Invoice Cycle Price Index Price Rule Group Site Group Quote Category Close

Network | Price Profile | Discount Schedule | Fee | Fee Profile | **Export Tax Mapping** | Special Taxing Rule | Advance Import Mapping | Audit Log

+ Add
 Open
 X Remove
 Export ▾
 View ▾
 Filter (F3)
 2 Total Record(s)

<input type="checkbox"/> Export Tax Mapping
<input type="checkbox"/> EXPORT TAX MAPPING 1
<input type="checkbox"/> a

?
 ?
 3.14s
 Ready
 Page 1 of 1
 Refresh