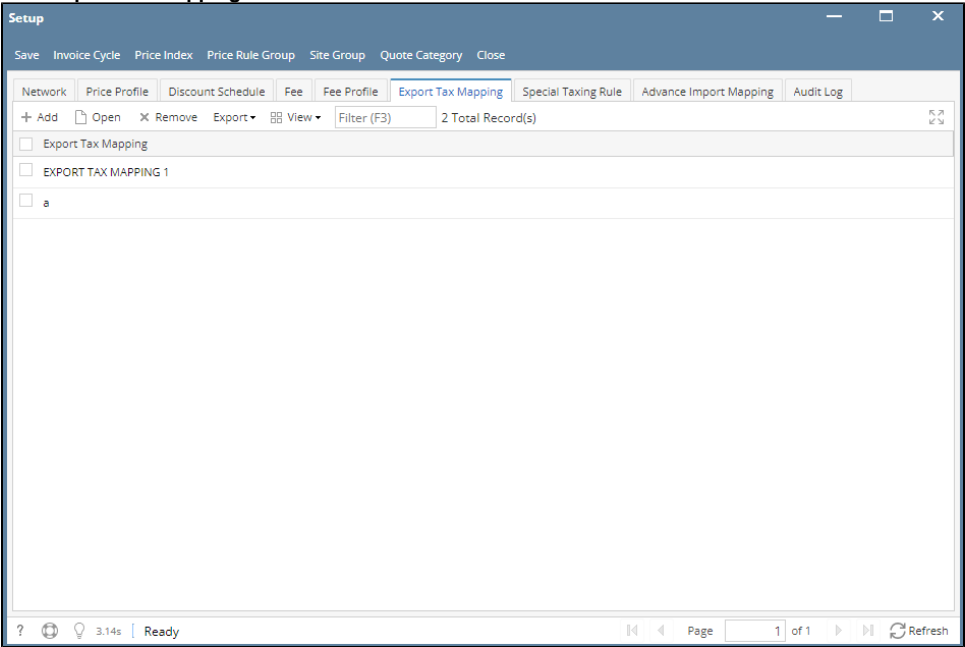


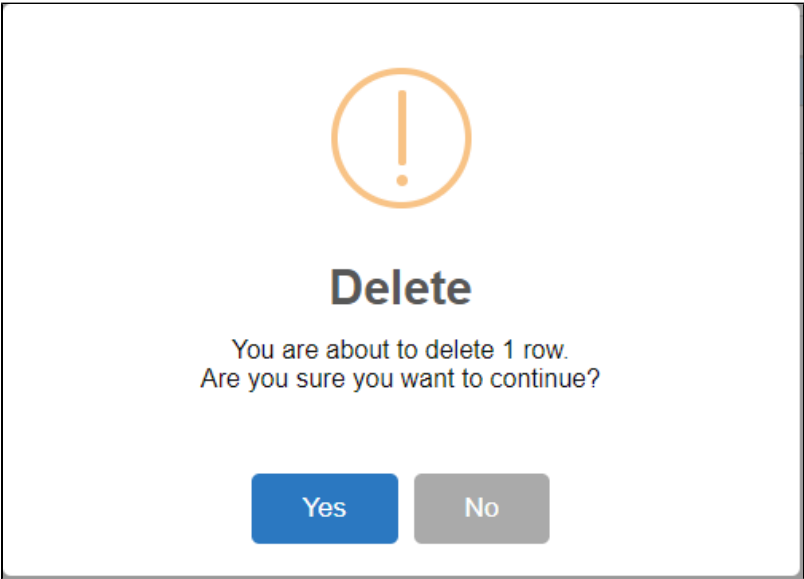
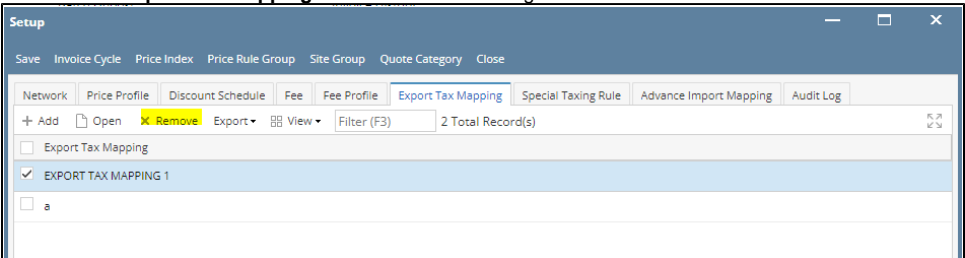
# How to Delete an Export Tax Mapping

## Delete an Export Tax Mapping via Remove grid button

1. From **Card Fueling** module, click **Setup**. The **Setup** screen will be displayed.  
Click **Export Tax Mapping** tab screen.



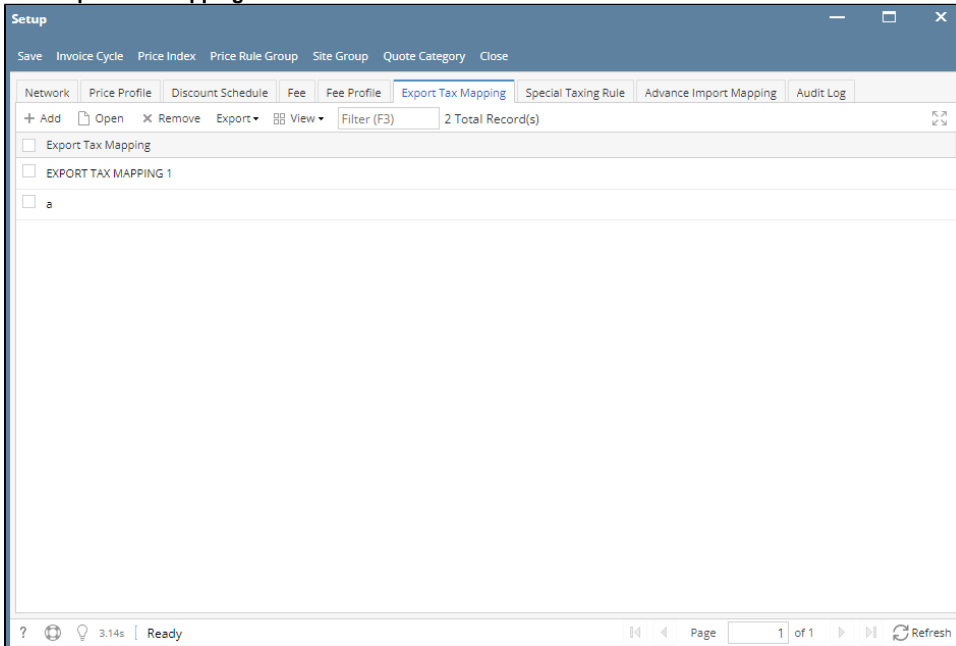
2. Select an **Export Tax Mapping** to be deleted. You can choose multiple **Export Tax Mapping** records.
3. Click **Remove** grid button. Delete message confirmation will prompt, click **Yes** button.  
The selected **Export Tax Mapping** will be removed on the grid list.



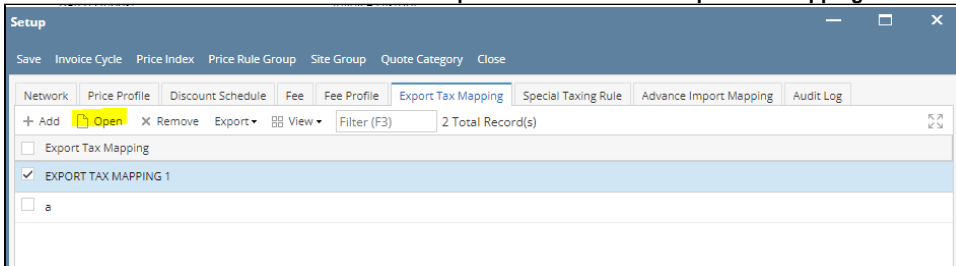
4. Click **Save** toolbar button.

### Delete an Export Tax Mapping via Delete toolbar button

1. From **Card Fueling** module, click **Setup**. The **Setup** screen will be displayed.  
Click **Export Tax Mapping** tab screen.



2. Select the desired record to be deleted then click **Open** toolbar button. The **Export Tax Mapping** detail screen will be displayed.



3. Click **Delete** toolbar button. Delete confirmation message will prompt, click **Yes** button.  
The **Export Tax Mapping** detail screen will be closed.

Export Tax Mapping - EXPORT TAX MAPPING 1

NewSaveDeleteSearchUndoClose

DetailsAudit Log

DescriptionEXPORT TAX MAPPING 1

File Field Mapping \* CFN

RemoveExportViewFilter (F3)1 Total Record(s)

<input type="checkbox"/> Record Marker	Tax Class	Position	Length	Format
<input type="checkbox"/> TAX!	State Sales Tax - TM	1	0	YYYYMMDD
<input type="checkbox"/>		0	0	

?0.67sReadyPage1 of 1Refresh

!

Delete

Are you sure you want to delete this record?

Yes

No