

How to Generate row

The **Generate Rows** screen is used to easily add rows by Account ID or Primary account and automatically configure its filter accounts. Also, each row generated will have Filter Accounts row type. If in any case you will want to change this to either Cash Flow Activity or Percentage row type, you can do so without worrying of losing the Filter Accounts because it will be preserved.

Changing this to other row types, except Cash Flow Activity and Percentage, will result to this message.



iRely i21

This will delete all associated accounts. Are you sure you want to continue?

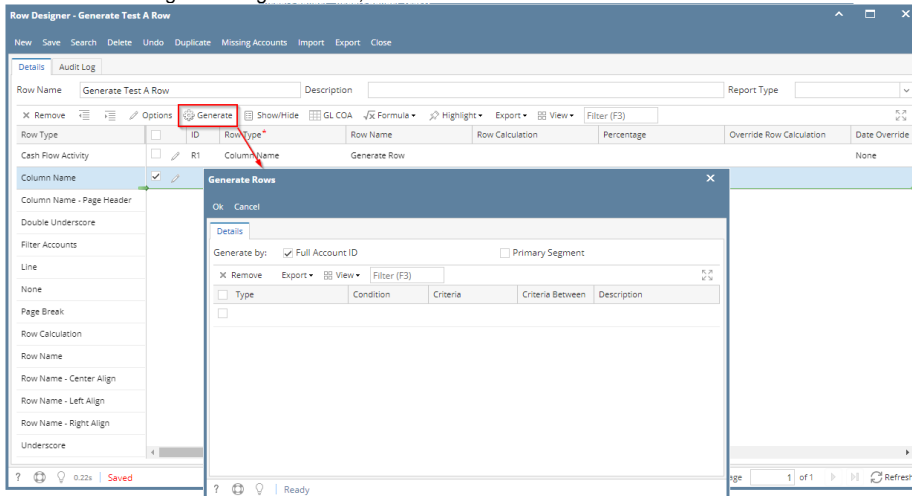
Yes

No

When you click Yes on this message, the Filter Accounts on the selected row will be deleted and you will not be able to restore it.

The following steps will guide you on how to generate rows.

1. In a new or existing row designer record, click **Generate Row** button. The **Generate Rows** screen will open.



2. Configure rows you want to generate. The following will show you in detail how to generate rows.
 - [How to Generate rows by Full Account ID](#)
 - [How to Generate rows by Primary Segment](#)
 - [How to Override Account ID and Account Description on generated rows](#)

The **Generate Rows** screen is used to easily add rows by Account ID or Primary account and automatically configure its filter accounts. Also, each row generated will have Filter Accounts row type. If in any case you will want to change this to either Cash Flow Activity or Percentage row type, you can do so without worrying of losing the Filter Accounts because it will be preserved.

Changing this to other row types, except Cash Flow Activity and Percentage, will result to this message.



iRely i21

This will delete all associated accounts. Are you sure you want to continue?

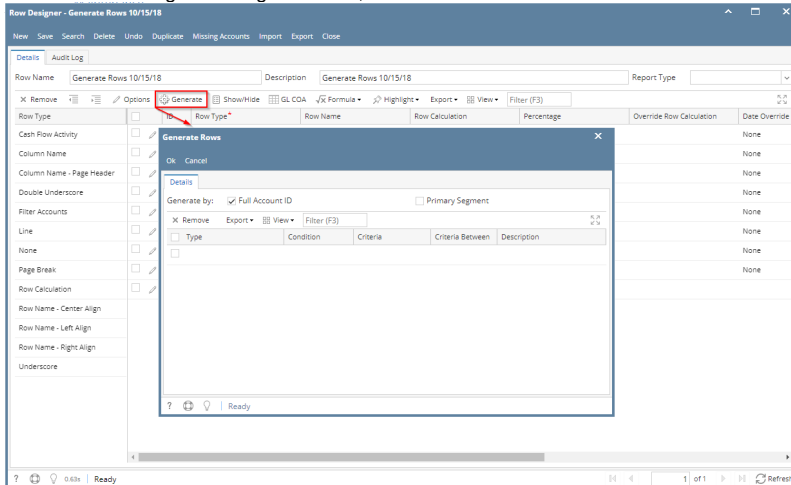
Yes

No

When you click Yes on this message, the Filter Accounts on the selected row will be deleted and you will not be able to restore it.

The following steps will guide you on how to generate rows.

1. In a new or existing row designer record, click **Generate Row** button. The **Generate Rows** screen will open.



2. Configure rows you want to generate. The following will show you in detail how to generate rows.
 - [How to Generate rows by Full Account ID](#)
 - [How to Generate rows by Primary Segment](#)
 - [How to Override Account ID and Account Description on generated rows](#)

The **Generate Rows** screen is used to easily add rows by Account ID or Primary account and automatically configure its filter accounts. Also, each row generated will have Filter Accounts row type. If in any case you will want to change this to either Cash Flow Activity or Percentage row type, you can do so without worrying of losing the Filter Accounts because it will be preserved.

Changing this to other row types, except Cash Flow Activity and Percentage, will result to this message.



iRely i21

This will delete all associated accounts. Are you sure you want to continue?

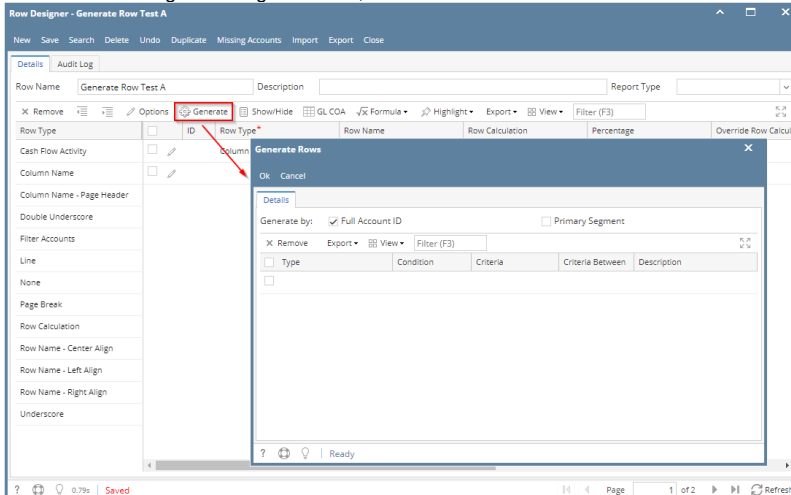
Yes

No

When you click Yes on this message, the Filter Accounts on the selected row will be deleted and you will not be able to restore it.

The following steps will guide you on how to generate rows.

1. In a new or existing row designer record, click **Generate Row** button. The **Generate Rows** screen will open.



2. Configure rows you want to generate. The following will show you in detail how to generate rows.
 - [How to Generate rows by Full Account ID](#)
 - [How to Generate rows by Primary Segment](#)
 - [How to Override Account ID and Account Description on generated rows](#)

The **Generate Rows** screen is used to easily add rows by Account ID or Primary account and automatically configure its filter accounts. Also, each row generated will have Filter Accounts row type. If in any case you will want to change this to either Cash Flow Activity or Percentage row type, you can do so without worrying of losing the Filter Accounts because it will be preserved.

Changing this to other row types, except Cash Flow Activity and Percentage, will result to this message.



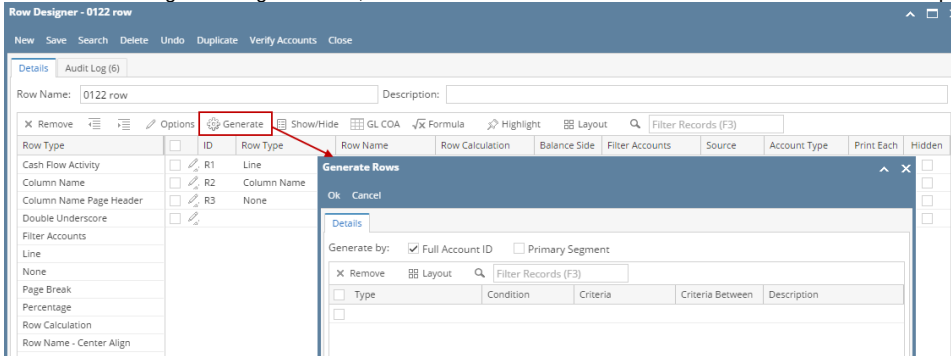
iRely i21

This will delete all associated accounts. Are you sure you want to continue?

When you click Yes on this message, the Filter Accounts on the selected row will be deleted and you will not be able to restore it.

The following steps will guide you on how to generate rows.

1. In a new or existing row designer record, click **Generate Row** button. The **Generate Rows** screen will open.

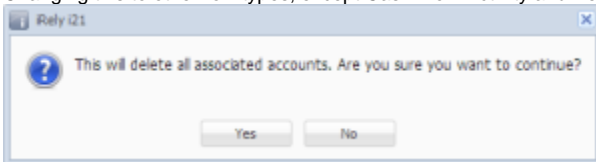


2. Configure rows you want to generate. The following will show you in detail how to generate rows.

- [How to Generate rows by Full Account ID](#)
- [How to Generate rows by Primary Segment](#)
- [How to Override Account ID and Account Description on generated rows](#)

The **Generate Rows** screen is used to easily add rows by Account ID or Primary account and automatically configure its filter accounts. Also, each row generated will have Calculation row type. If in any instance you will want to change this to either Hidden or Cash Flow Activity row type, you can do so without worrying of losing the Account Filter because it will be preserved.

Changing this to other row types, except Cash Flow Activity and Percentage, will result to this message.



When you click Yes on this message, the Filter Accounts on the selected row will be deleted and you will not be able to restore it.

The following steps will guide you on how to generate rows.

1. Add a [new row designer](#) record.
2. Click **Generate Row** toolbar button and Generate Rows screen will open.
3. Configure rows you want to generate. The following will show you in detail how to generate rows.
 - [How to Generate rows by Full Account ID](#)
 - [How to Generate rows by Primary Segment](#)
 - [How to Override Account ID and Account Description on generated rows](#)