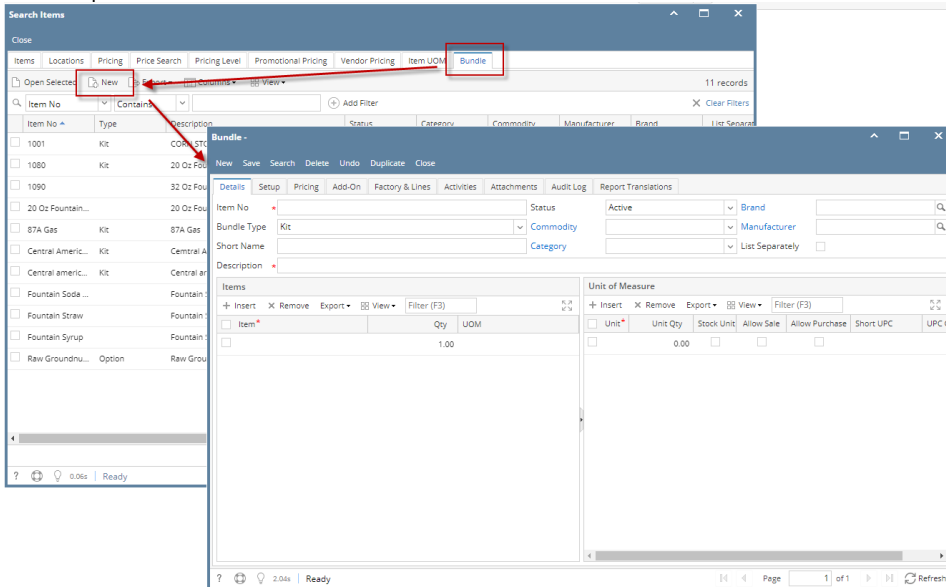
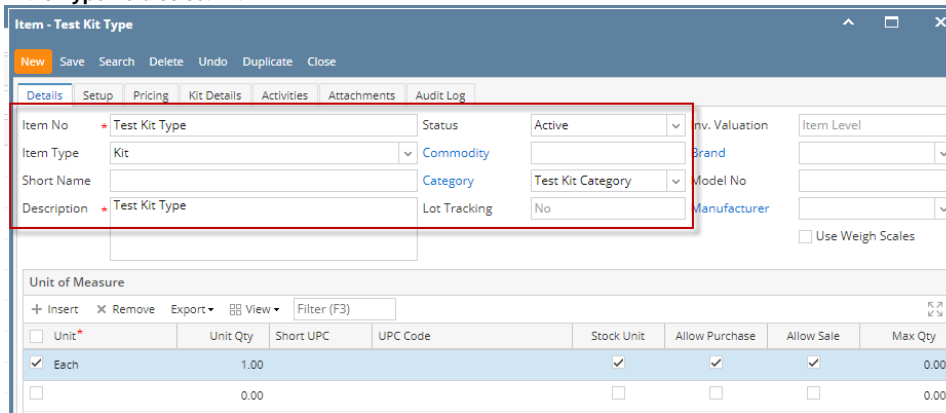


# How to Add a Bundle Item - Kit Type

1. From Inventory module > click on **Items** menu.
2. The Search screen for Items will be shown. Click **Bundle Tab>New** toolbar button.
3. This will open a new Item screen.



4. In the **Details** tab, enter **Item No** and **Description**.
5. In the **Type** field select **Kit**.



6. Lot tracking should be default as No and disabled.
7. Fill in other information as needed.
8. Setup Unit of Measure. See [How to Setup Item UOM](#).
9. Setup Item Locations. See [How to Setup Item Location](#).
10. Setup GL Accounts. See [How to Setup GL Accounts for the items](#).
11. Setup Tax for the item if it is taxable. See [How to Setup Tax for an item](#).
12. Setup Pricing. See [How to Setup Item Pricing](#).
13. Setup Pricing Level as needed. See [How to Setup Pricing Level](#).
14. Setup Special Pricing as needed. See [How to Setup Promotional Pricing](#).

15. Go to Kit Details tab and fill in the components of the Kit.

Item - Test Kit Type

NewSaveSearchDeleteUndoDuplicateClose

DetailsSetupPricingKit DetailsActivitiesAttachmentsAudit Log

Kit Components

+ InsertX RemoveExportViewFilter (F3)

Component\*

Input Type\*

Test Component

Check Box

Component Details

+ InsertX RemoveExportViewFilter (F3)

Item No.	Description	Quantity	UOM	Price	Selected
<input type="checkbox"/> CORN	CORN	1	Bushels	15.00	<input type="checkbox"/>
<input checked="" type="checkbox"/> CORN 3	CORN	1	Bushels	15.00	<input type="checkbox"/>
<input type="checkbox"/>		0		0.00	<input type="checkbox"/>

16. Save the record. You can click the **Save toolbar button** to save it. In case you miss to click this button and you click the **Close toolbar button** or the **x button** at the top right corner of the screen, i21 will prompt you if you would like to save it before closing the screen.