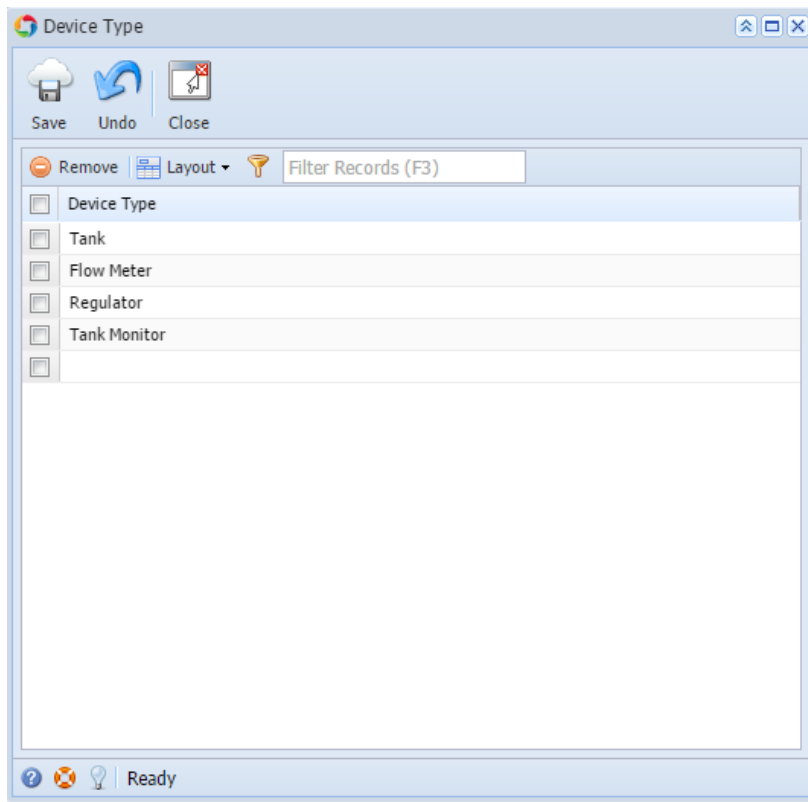


# Device Type

This screen is used to maintain all possible types of device used in your operation. Tank, Flow Meter, Regulator and Tank Monitor are system defined device types, but you can enter as other device types as needed.



## Related Topic

- [How to Add a New Record in Maintenance Screens](#)
- [How to Delete a Record in Maintenance Screens](#)

## Pages

- [How to Open the Device Type screen](#)