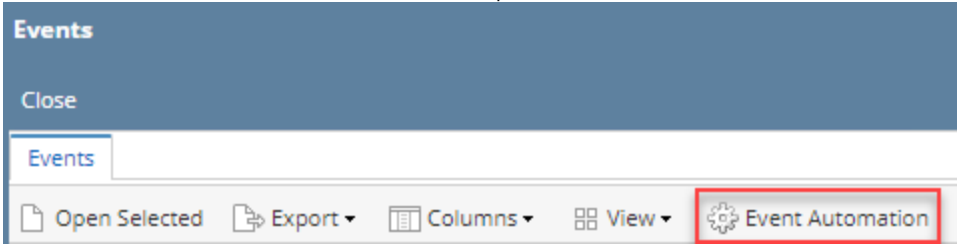


How to Automate the Creation of Events

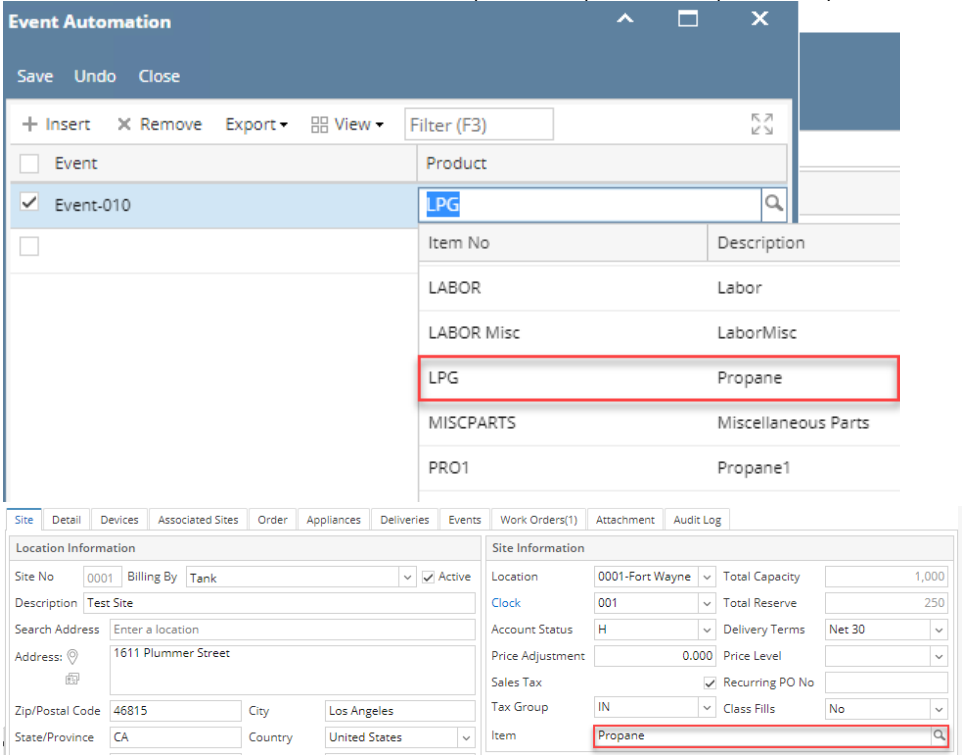
An event can automatically be created by the system through [Synchronization Process](#) if selected services were added to the Event Automation screen.

1. On the Menu panel, click the **Events menu**. This will open the Search Events screen.
2. Click the **Event Automation toolbar button**. This will open the Event Automation screen.



3. Click the **Event combo box button** and then select the event from the combo box list.
4. Click on **Product combo box button** and select a product from the combo box list. Repeat step 1 and 2 if you wish to automate other events.
5. **Save** the changes in the Event Automation screen.
6. Initiate the [Synchronization process](#). During synchronization, the event set up in the Event Automation screen will be automatically created if a record in the **tbITMCOBOLWRITE** table (record with **ItemAvailableForTM = S**, and a **Product** similar to the Event Automation setup) matched that of the Event Automation's Product setup.

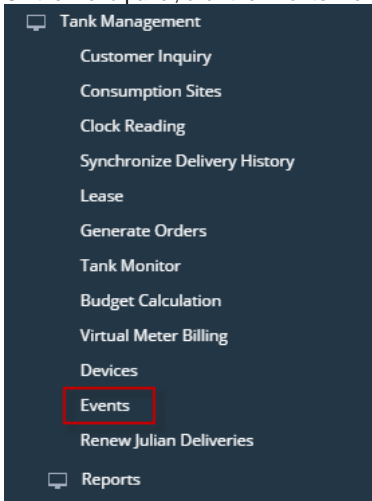
To illustrate further, on the first screenshot below the product setup matched the product setup on the Consumption Sites record (2nd screenshot).



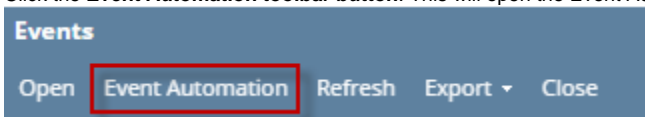
If this same consumption site has a record in the **tbITMCOBOLWRITE** table where **ItemAvailableForTM = S**, the synchronization process will generate the **Device Painted (Event-010)** which will be displayed on the Consumption Sites' Event History tab.

An event can automatically be created by the system through [Synchronization Process](#) if selected services were added to the Event Automation screen.

1. On the Menu panel, click the **Events menu**. This will open the Search Events screen.



2. Click the **Event Automation toolbar button**. This will open the Event Automation screen.



3. Click the **Event combo box button** and then select the event from the combo box list.
4. Click on **Product combo box button** and select a product from the combo box list. Repeat step 1 and 2 if you wish to automate other events.
5. **Save** the changes in the Event Automation screen.
6. Initiate the [Synchronization process](#). During synchronization, the event set up in the Event Automation screen will be automatically created if a record in the **tbITMCOBOLWRITE** table (record with **ItemAvailableForTM = S**, and a **Product** similar to the Event Automation setup) matched that of the Event Automation's Product setup.

To illustrate further, on the first screenshot below the product setup matched the product setup on the Consumption Sites record (2nd screenshot).

The screenshot shows the 'Event Automation' window. The 'Event' dropdown is set to 'Event-010'. The 'Product' dropdown is set to 'PROPANE'. Below the dropdowns, a table lists products with 'PROPANE' highlighted in blue. The bottom section of the window shows the 'Site Information' tab for Site 0001, with 'Propane' selected in the 'Item' dropdown.

Item No	Description
33.5# AFL	33.5# ALUM FORKLIFT CYLINDER
33.5# SFL	33.5# STEEL FORKLIFT CYLINDER
AVIATION	AVIATION GASOLINE
LEAK CHECK	LEAK CHECK SERVICE
PROPANE	PROPANE

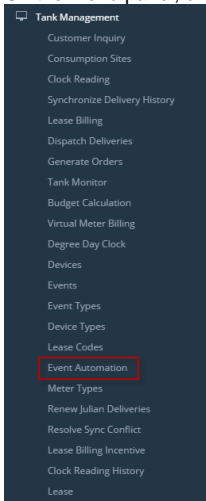
Site Information

Location: 0001 - Fort Wayne
 Clock: 001
 Account Status: A
 Price Level: Reseller
 Sales Tax: ☐
 Tax Group: IN SST
 Class Fills: Product Class
 Item: Propane

If this same consumption site has a record in the **tbITMCOBOLWRITE** table where **ItemAvailableForTM = S**, the synchronization process will generate the **Device Painted (Event-010)** which will be displayed on the Consumption Sites' Event History tab.

An event can automatically be created by the system through [Synchronization Process](#) if selected services were added to the Event Automation screen.

1. On the Menu panel, click the **Event Automation Setup** menu. This will open the Event Automation screen.



2. Click the **Event combo box button** and then select the event from the combo box list.
3. Click on **Product combo box button** and select a product from the combo box list. Repeat step 1 and 2 if you wish to automate other events.
4. **Save** the changes in the Event Automation screen.
5. Initiate the [Synchronization process](#). During synchronization, the event set up in the Event Automation screen will be automatically created if a record in the **tbITMCOBOLWRITE** table (record with **ItemAvailableForTM = S**, and a **Product** similar to the Event Automation setup) matched that of the Event Automation's Product setup.

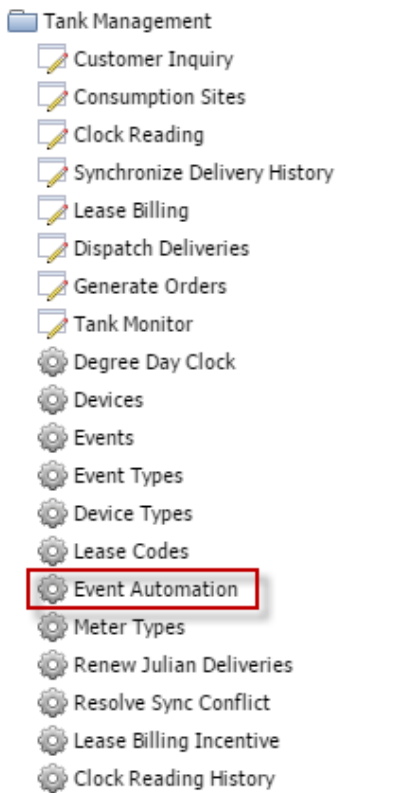
To illustrate further, on the first screenshot below the product setup matched the product setup on the Consumption Sites record (2nd screenshot).

The screenshot shows two windows. The top window is titled 'Event Automation' and contains a table with columns 'Event' and 'Product'. The 'Event' column has a checked box for 'Event-010'. The 'Product' column has a dropdown menu showing 'PROPANE'. Below this is a list of products with columns 'Item No' and 'Description'. The products are: 33.5# AFL (33.5# ALUM FORKLIFT CYLINDER), 33.5# SFL (33.5# STEEL FORKLIFT CYLINDER), AVIATION (AVIATION GASOLINE), LEAK CHECK (LEAK CHECK SERVICE), and PROPANE (PROPANE). The 'PROPANE' row is highlighted with a red box. The bottom window is titled 'Consumption Sites' and shows a form for 'Site Information'. The 'Item' dropdown menu is set to 'Propane' and is highlighted with a red box.

If this same consumption site has a record in the **tbITMCOBOLWRITE** table where **ItemAvailableForTM = S**, the synchronization process will generate the **Device Painted (Event-010)** which will be displayed on the Consumption Sites' Event History tab.

An event can automatically be created by the system through [Synchronization Process](#) if selected services were added to the Event Automation screen.

1. On the Menu panel, click the **Event Automation Setup** menu. This will open the Event Automation screen.



2. Click the **Event combo box button** and then select the event from the combo box list.
3. Click on **Product combo box button** and select a product from the combo box list. Repeat step 1 and 2 if you wish to automate other events.
4. **Save** the changes in the Event Automation screen.
5. Initiate the [Synchronization process](#). During synchronization, the event set up in the Event Automation screen will be automatically created if a record in the **tblTMCOBOLWRITE** table (record with **ItemAvailableForTM = S**, and a **Product** similar to the Event Automation setup) matched that of the Event Automation's Product setup.

To illustrate further, on the first screenshot below the product setup matched the product setup on the Consumption Sites record (2nd screenshot).

The top screenshot shows the 'Event Automation' window. It has a toolbar with 'Save', 'Undo', and 'Close' buttons. Below the toolbar is a 'Filter Records (F3)' button. A table lists events and products:

Event	Product
<input checked="" type="checkbox"/> Event-004	1130
<input type="checkbox"/>	

Below the table is a detailed view of the selected product:

Item No	Description
1130	PROPANE

The bottom screenshot shows the 'Consumption Sites' window. It has tabs for 'Site', 'Detail', 'Devices', 'Associated Sites', 'Appliances', 'Call Entry', 'Delivery History', 'Event History', and 'Work Orders'. The 'Site' tab is active. It contains two main sections: 'Location Information' and 'Site Information'.

Location Information:

- Site No: 0001
- Billing By: Tank
- Active: ☒
- Description: Site 1
- Address: GREEN ROAD
- Zip Code: 55013
- City: CHISAGO CITY
- State: MN
- Country: United States
- Latitude: 0.000000
- Longitude: 0.000000
- Driver: Company
- Route: 063
- Sequence:

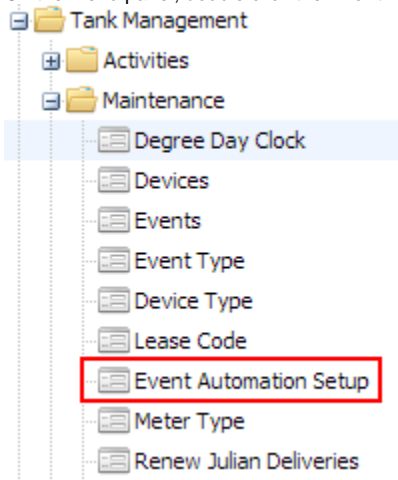
Site Information:

- Location: 063
- Clock: C1
- Account Status: A
- Sales Tax: ☒
- Tax State ID: MN
- Tax Locale 1:
- Tax Locale 2:
- Item: PROPANE
- Total Capacity: 0.000000
- Total Reserve: 0.000000
- Price Reduction: 0.0000
- Class Fills: Product Class
- Recurring PO No:
- Print AR Balance: ☐ Energy Trac

If this same consumption site has a record in the **tblTMCOBOLWRITE** table where **ItemAvailableForTM = S**, the synchronization process will generate the **Event-004** which will be displayed on the Consumption Sites' Event History tab.

An event can automatically be created by the system through [Synchronization Process](#) if selected services were added to the Event Automation screen.

1. On the Menu panel, double click the **Event Automation Setup** menu. This will open the Event Automation screen.



2. Click the **Event combo box button** and then select the event from the combo box list.
3. Click on **Product combo box button** and select a product from the combo box list. Repeat step 1 and 2 if you wish to automate other events.
4. **Save** the changes in the Event Automation screen.
5. Initiate the [Synchronization process](#). During synchronization, the event set up in the Event Automation screen will be automatically created if a record in the **tbITMCOBOLWRITE** table (record with **ItemAvailableForTM = S**, and a **Product** similar to the Event Automation setup) matched that of the Event Automation's Product setup.

To illustrate further, on the first screenshot below the product setup matched the product setup on the Consumption Sites record (2nd screenshot).

The top screenshot shows the 'Event Automation' window. It has a toolbar with 'Save', 'Undo', and 'Close' buttons. Below the toolbar is a 'Filter Records (F3)' button. The main area is a table with columns 'Event' and 'Product'. The first row is 'Event-004' and 'LEAK TEST'. Below the table is a 'Filter Records (F3)' button and a list of 413 records. The list has columns 'Item No' and 'Description'. The first three rows are: 2222 GAS CHECK, 2224 LEAK TEST (highlighted in yellow), and 2224 LEAK TEST.

The bottom screenshot shows the 'Consumption Sites' window. It has tabs for 'Site', 'Detail', 'Devices', 'Associated Sites', 'Appliances', 'Call Entry', 'Delivery History', 'Event History', and 'Work Orders'. The 'Site' tab is selected. The 'Location Information' section has fields for 'Site No' (0001), 'Billing By' (Tank), 'Active' (checked), 'Description' (Site 1), 'Address' (GREEN ROAD), 'Zip Code' (55080), 'City' (CHISAGO CITY), 'State' (MN), 'Country' (United States), 'Latitude' (0.000000), 'Longitude' (0.000000), 'Driver' (Company), and 'Route' (063). The 'Site Information' section has fields for 'Location' (063), 'Total Capacity' (0.00), 'Clock' (C1), 'Total Reserve' (0.00), 'Account Status' (A), 'Delivery Terms' (20 - COD), 'Sales Tax' (checked), 'Price Reduction' (0.0000), 'Tax State ID' (MN), 'Class Fills' (Any Item), 'Tax Locale 1', 'Recurring PO No', 'Tax Locale 2', 'Print AR Balance' (checked), and 'Energy Trac'. The 'Item' field is set to 'LEAK TEST'.

If this same consumption site has a record in the **tbITMCOBOLWRITE** table where **ItemAvailableForTM = S**, the synchronization process will generate the **Event-004** which will be displayed on the Consumption Sites' Event History tab.