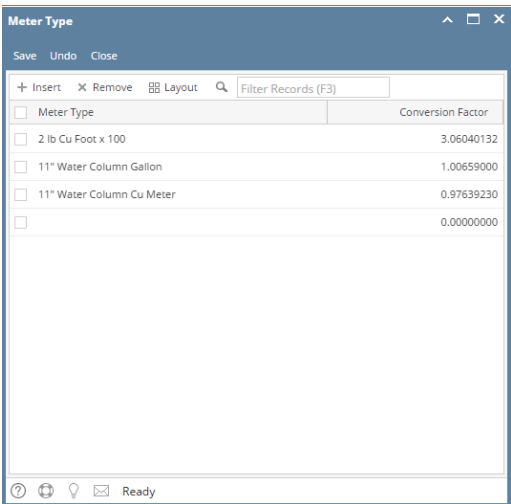
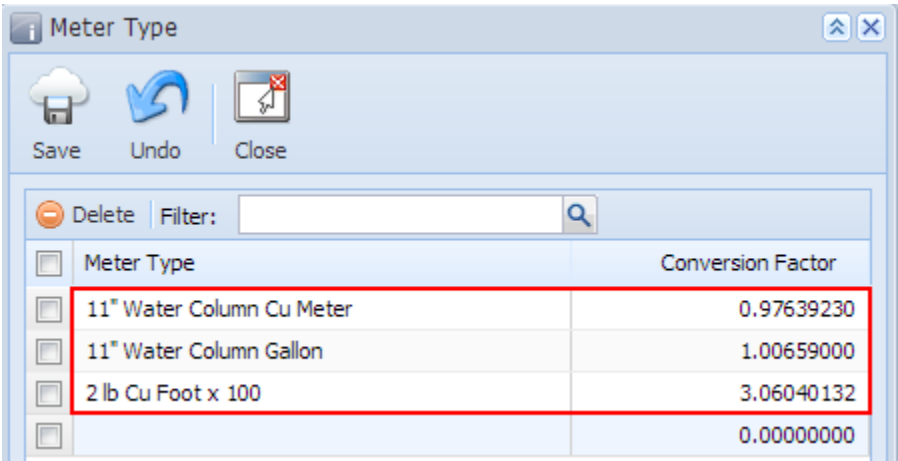


Meter Type

The Meter Type screen is used to manage the types of meter and its conversion factor used in the operation. The system has a predefined meter types that are not editable. All the recorded meter types will be displayed on [Devices > Meter Type](#) combo box list.



The Meter Type screen is used to manage the the types of meter and its conversion factor used in the operation. The system has a predefined meter types that are not editable. All the recorded meter types will be displayed on [Devices > Meter Type](#) combo box list.



Field Description

Meter Type - Enter a unique identifier for the meter type.

Conversion Factor - Enter the appropriate conversion factor of the meter type. This field will accept up to 8 decimal places only.

Related Topic

- [How to Add a New Record in Maintenance Screens](#)
- [How to Delete a Record in Maintenance Screens](#)

Pages

- [How to Open the Meter Types screen](#)