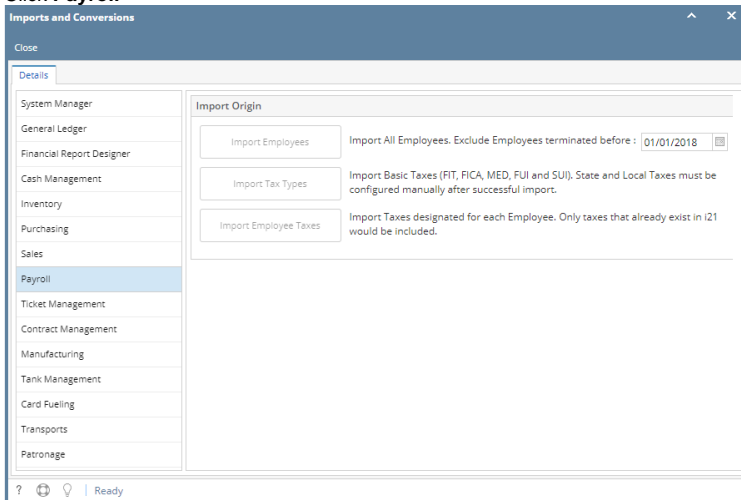
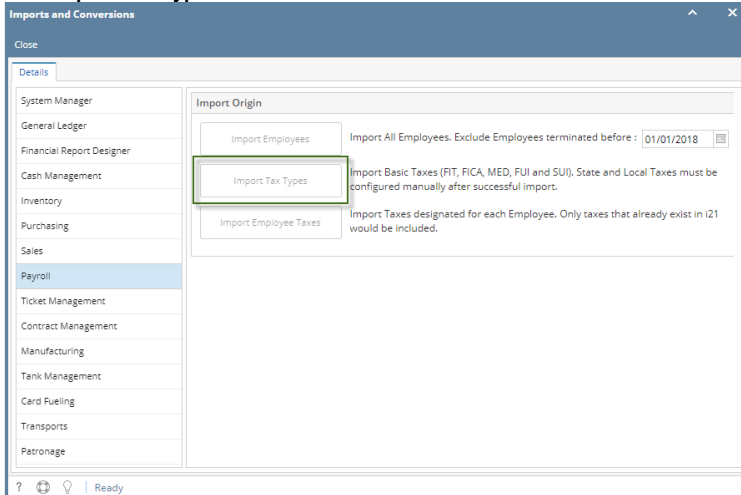


How to Import Origin Tax Types to i21 Payroll

1. From System Manager, click **Imports and Conversions**
2. Click **Payroll**



3. Click **Import Tax Types** button



4. Click OK



If origin has duplicate Tax Types, only the Tax Type with the latest date created is imported.

If Tax Type ID already exist in i21, tax type with the same ID from origin will not be imported