

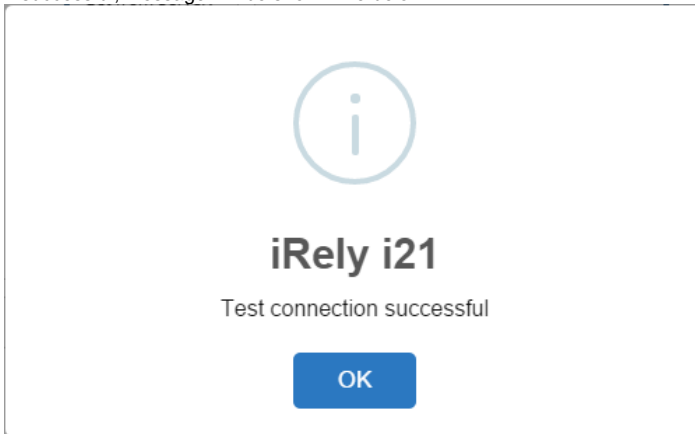
# How to Edit Panel Connection

Connections are established to connect the dashboard to the database that is holding the data you want to display.

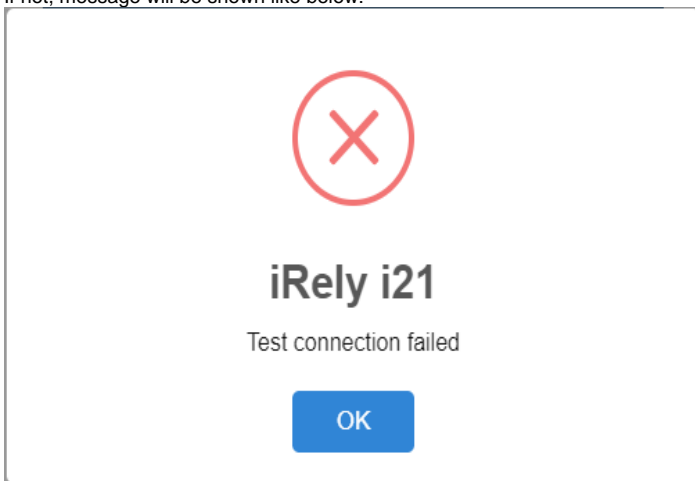


Editing connections may require help from your network administrator. Only user that has Administrator Dashboard Role can create new connections.

1. Click the **Panel Connection** menu (*Connections in 17.1*) from the Dashboard main Menu.
2. Select Connection record to update by clicking **Next** or **Previous button**.
3. Update desired Connection fields then click **Save toolbar button**.
4. To verify whether the connection you edited is working, click the **Test toolbar button**.  
If successful, message will be shown like below:



If not, message will be shown like below:



In case like this, kindly review your connection details if you are connecting to an existing and working database.