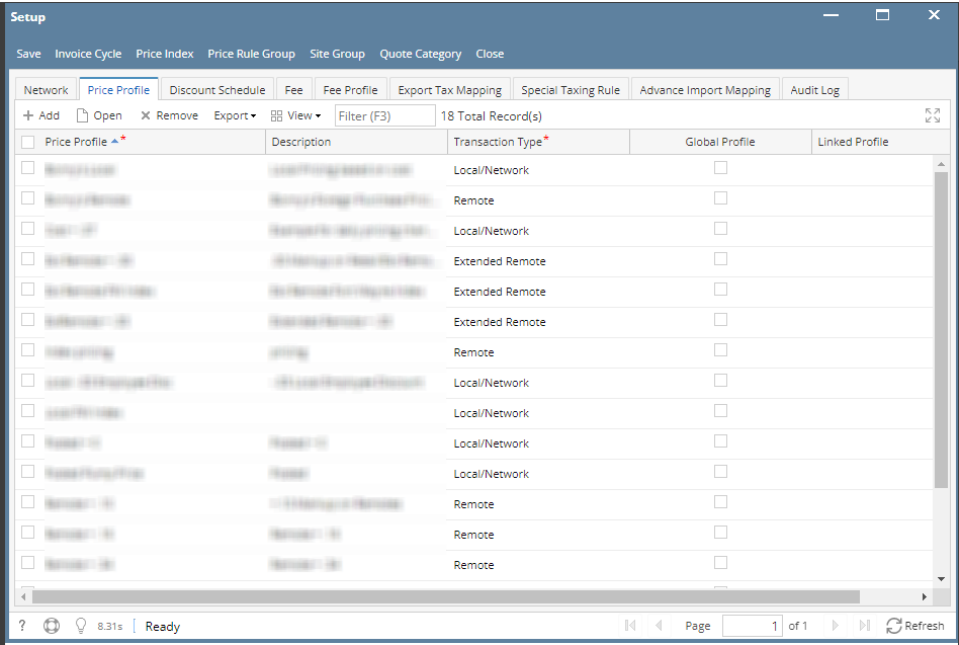


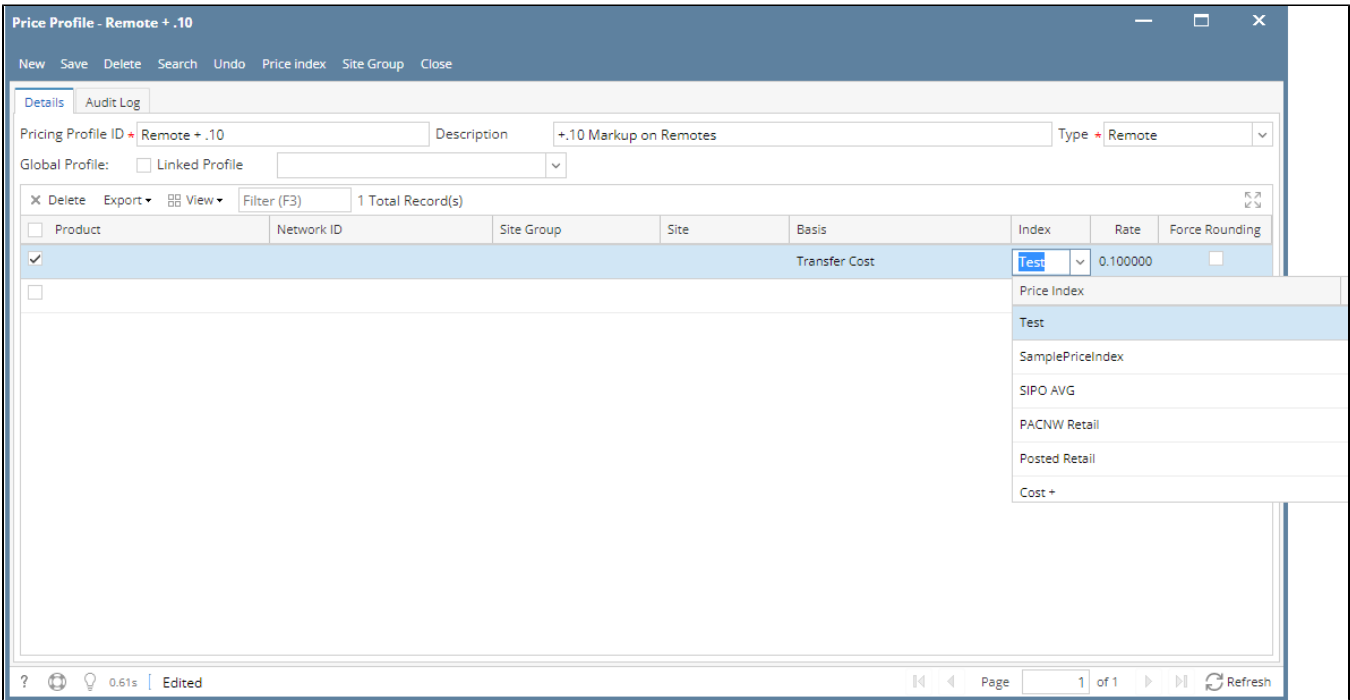
How to Setup Price Index in Price Profile

1. From **Card Fueling** module, click **Setup**. The **Setup** screen will be displayed.
Navigate to **Price Profile** tab. Select a **Price Profile** where you want to setup **Price Index**. Click **Open** toolbar button to open **Price Profile** details



2. On **Price Profile** detail screen, you can find the **Index** column.

Click on the drop down symbol to display all available **Price Profile**. Records will be coming from Card Fueling > Setup > Price Index.



3. Select **Price Profile** then click **Save** toolbar button.
Then click the **Close** toolbar button or **X** button.