

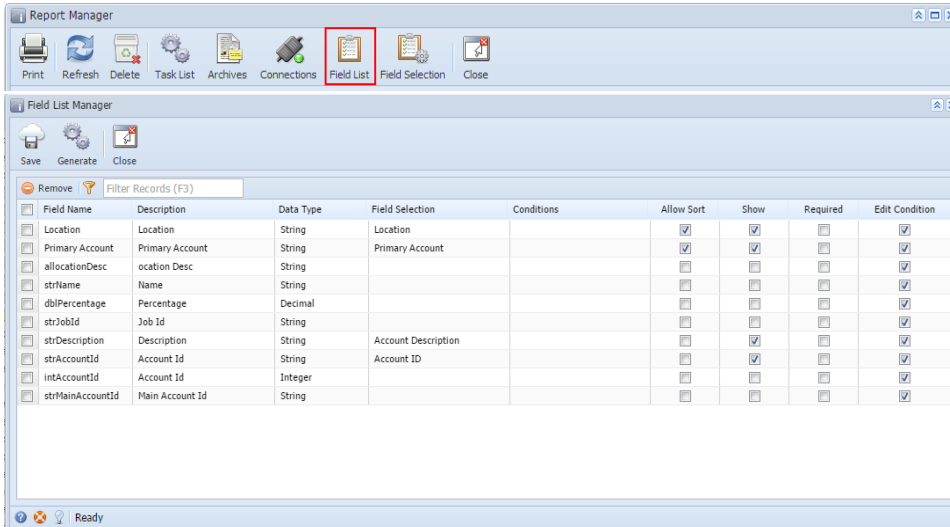
Field List Manager

Field List Manager lists down all the fields based on the report data source. This screen is used to configure the filter fields on the Report Parameters screen.


How to open the Field List Manager screen:

 To open this screen, the selected report must have a Data Source with [Connection](#).

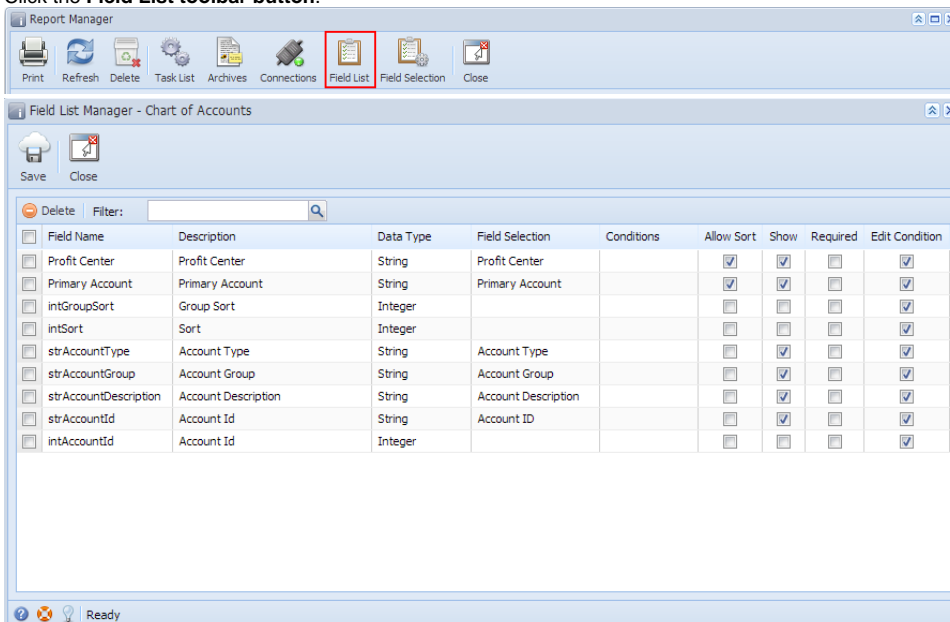
1. Open the **Report Manager** screen. Refer to [Report Manager](#).
2. Select the specific report where you want to view the field list.
3. Click the **Field List** toolbar button.



How to open the Field List Manager screen:

 To open this screen, the selected report must have a Data Source with [Connection](#).

1. Open the **Report Manager** screen. Refer to [Report Manager](#).
2. Select the specific report where you want to view the field list.
3. Click the **Field List** toolbar button.



Pages

- [How to Configure Field List Manager](#)