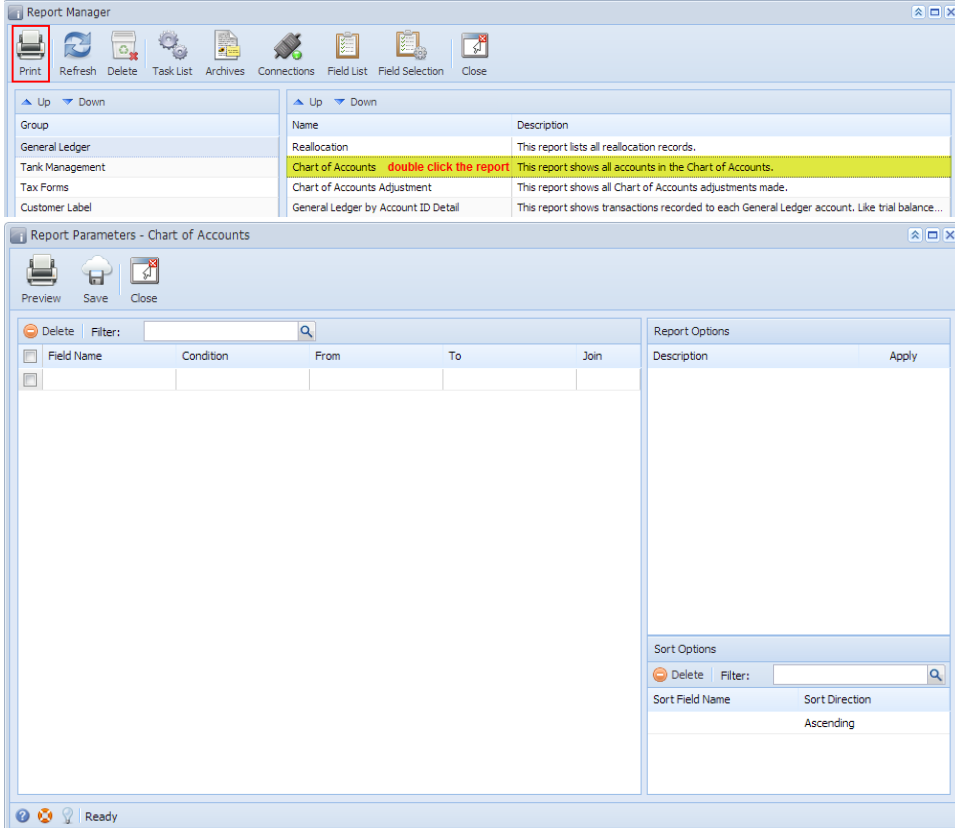


# Report Parameters

The Report Parameters screen is used to filter and define the data that will be displayed to the [Report Viewer](#).

## How to open the Report Parameters screen:

1. Open the **Report Manager** screen. Refer to [Report Manager](#).
2. Select a specific report, and then click the **Print toolbar button**. You can also double on the selected report.



## Pages

- [Report Filter panel](#)
- [Report Filter Condition](#)
- [Report Join Conjunction](#)