

IDP - Custom Models

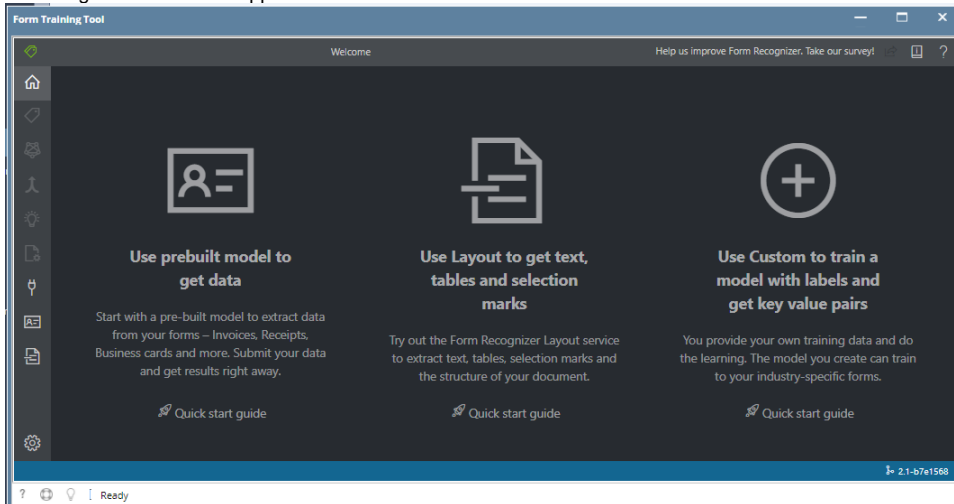
Custom Models are used to train documents and to map the fields that are needed to create transactions in i21.

Prerequisites

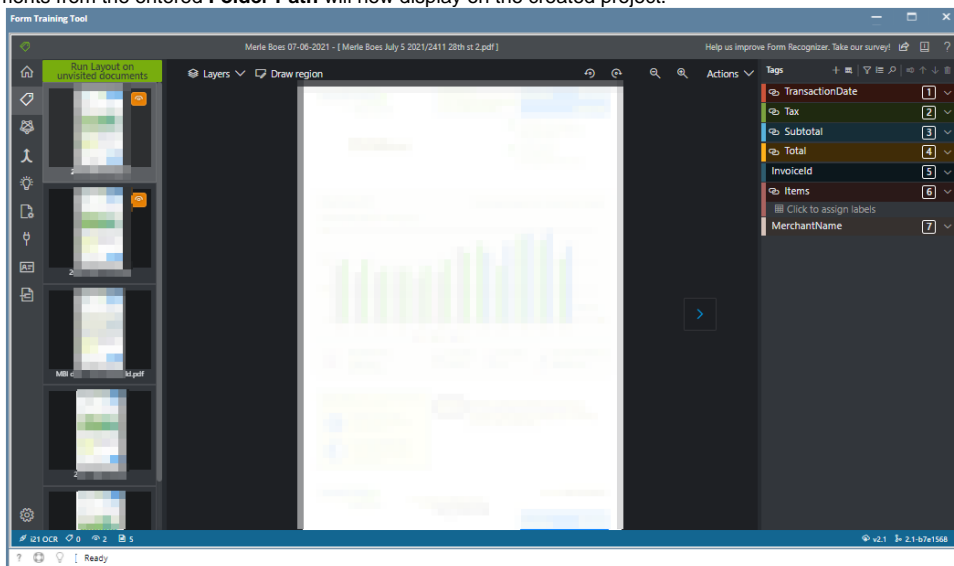
1. Create a Folder and add at least 5 documents to train in the [IDP - Form Training Documents](#) screen.

How to Create Custom Models

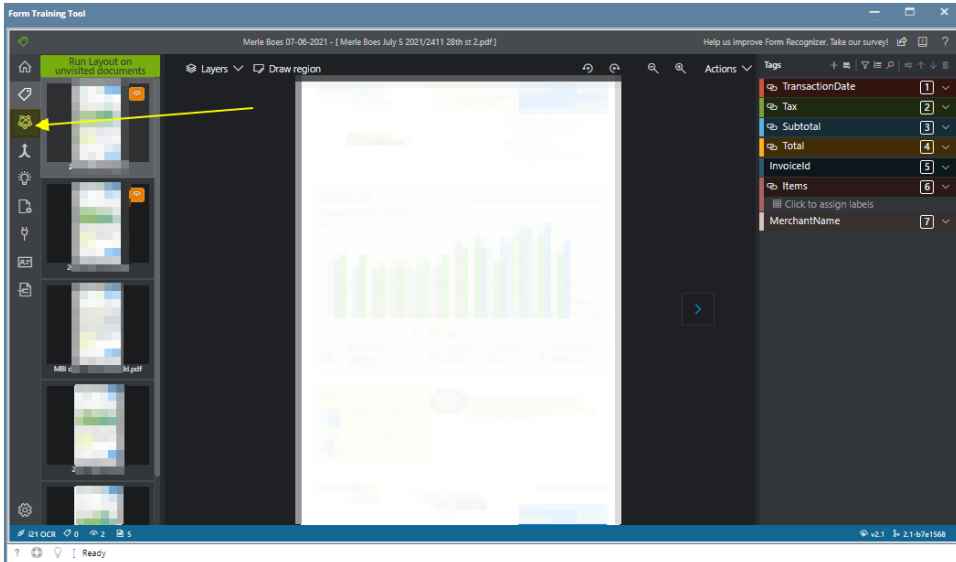
1. From the **IDP** module, click **Custom Models**.
2. The Form Training Tool screen will appear.



- a. Click the **Use Custom to train a model with labels and get key value pairs**
4. Click **New Project**
5. Enter all the required fields and click **Save Project**
 - a. **Display Name** - The project name
 - b. **Folder Path** - The folder path of the documents
 - c. **Form recognizer service URI** - The Endpoint URI provided by iRely
 - d. **API Key** - The API Key provided by iRely
 - e. **Description** - The project connection description
6. All documents from the entered **Folder Path** will now display on the created project.

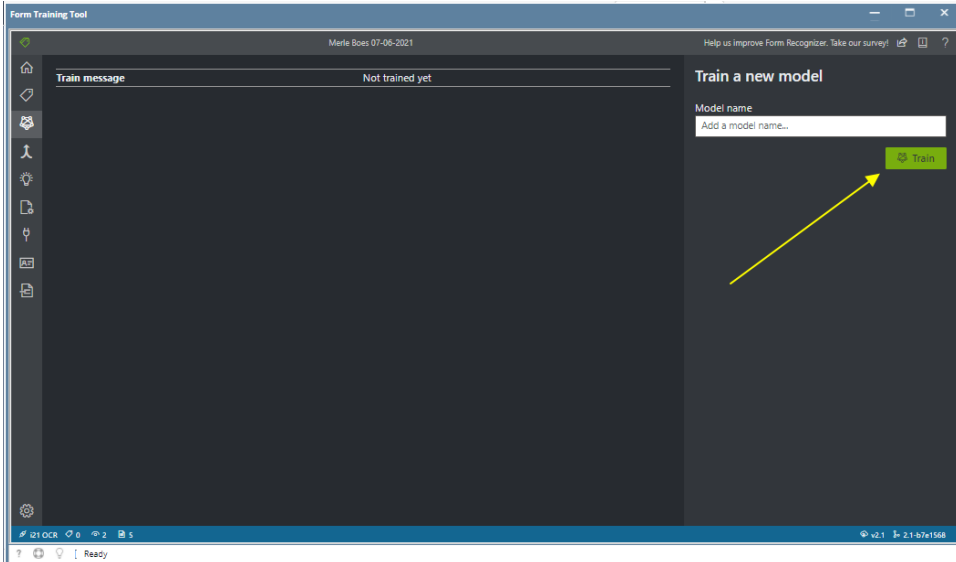


- a. Map the following tags
 - a. TransactionDate
 - b. Tax
 - c. Subtotal
 - d. Total
 - e. Invoiceld
 - f. Items
8. Go to the **Train** menu



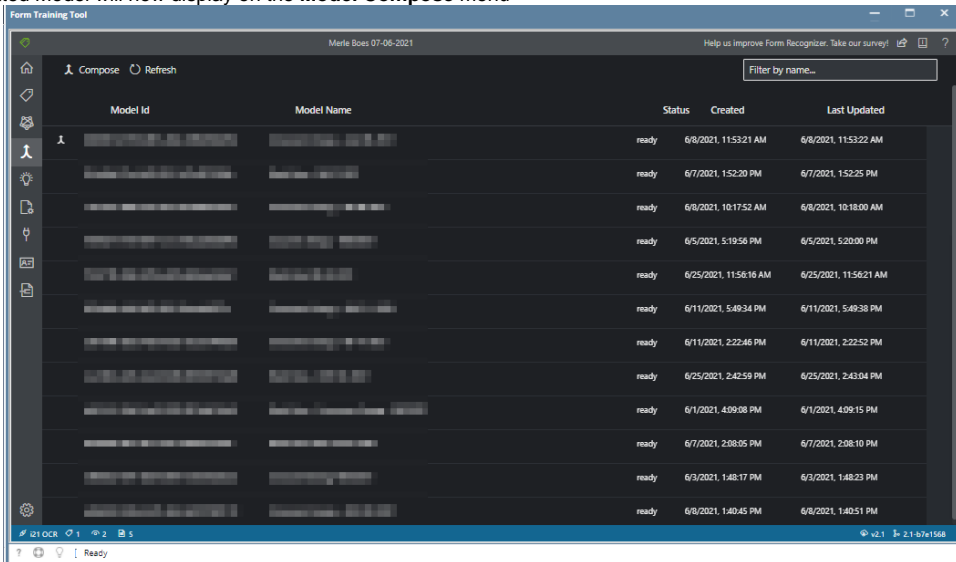
a.

9. Enter the Model name and click the **Train** button



a.

10. The created Model will now display on the **Model Compose** menu



a.