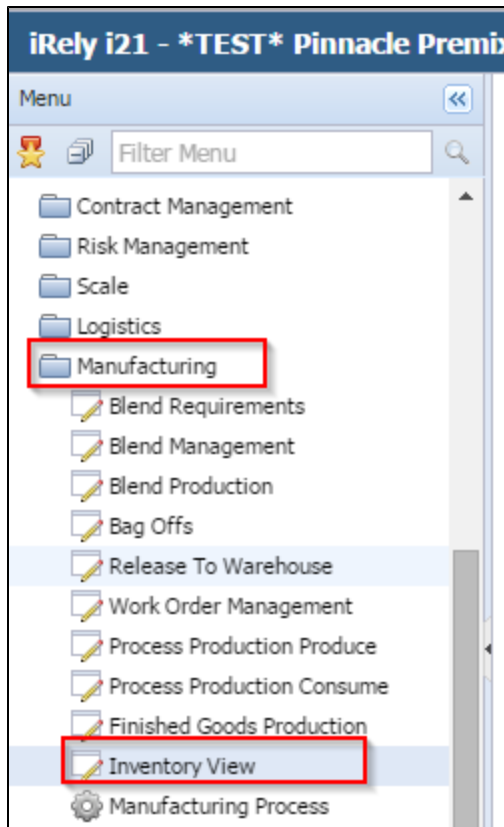


Inventory View - Manager

Inventory View module is very helpful looking at the inventory and the historical transaction against the lot. All information regarding the lot can be viewed in this screen. This view has various options to perform different transactions on the lot/ticket available in the logged in factory.

The inventory view screen can be accessed by clicking on "Inventory View" under "Manufacturing" as shown below:



When Warehouse is enabled, the SKU and Container for a Lot will be displayed in an expandable grid, as shown below:

The following columns are available under the SKU grid.

Columns	Description
Container ID	Displays the Container ID
SKU ID	Displays the SKU ID
SKU Status	Displays the Status of the SKU
Quantity	Displays the Quantity available in the SKU
Quantity UOM	Displays the Quantity UOM
Location Name	Displays the Location Name
Unit Name	Displays the Unit Name where SKU is available
Factory Name	Displays the Factory Name

Inventory View Data Display Summary:

- There will be one record for every lot-location combination.

For example, if a lot is stored in 2 different locations physically with partial quantity, there will be 2 records with the same lot Id.

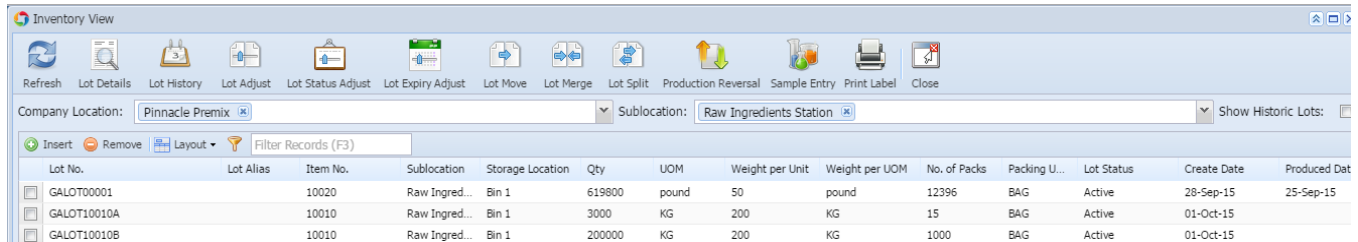
- Each record will have the following information

Sl#	Group	Column	Description
1	Lot Detail	LotID #	

2		Expiry Date	
3		Lot Status	
4		Lot Alias	<ul style="list-style-type: none"> •Raw Tea: Tracking number (Ex.: RT number, TTI number) •Blend, FG: Work Order by which the lot was created
5		Parent Lot ID	
6		Child Count	Lots available within the parent lot
7		Lot Primary Status Code	
8		Create Date	
9		Created By	
10	Material	Material Name	
11		Description	
12		Material Type	
13		Owner	Owner as assigned in material configuration UDA
14		Customer	Customer as assigned in material configuration UDA
15		Cases Per Pallet	Cases Per Pallet as assigned in material configuration UDA
16	Quantity	Primary Quantity	
17		UOM	
18		Number of Bags	
19		Weight Per Unit	
20		Weight Per Unit UOM	
21		Queued Quantity	Initially it will be equal to Primary Quantity and will be reduced as used in production
22	Location	Location Name	
23		Location Group	
24		Warehouse	
25		Factory Name	
26	Purchase detail	Vendor ID	Vendor ID as entered in receipt ("Received From")
27		Vendor Lot Num	Supplier Lot Number as entered in receipt
28		Garden Name	As entered in receipt (as "Remarks")
29		Price Per Unit	As received from ERP as part of PO
30		Container #	Receive Container #
31		Receipt Note	Note as entered in receipt
32	Manufacturing detail	Manufactured Date	
33		Production Line Name	
34	iRely - Internal	Pallets	
35		Due Date	
36		Start Quantity	
37		Report Path App Setting	
38		Representing Qty	
39		Date	
40		Short Desc	
41	Customer Specific	CAD #	Not Applicable
42		CAD WT	Not Applicable

43		Contract #	Not Applicable
44		Container Type	Not Applicable
45		Storage Container	Not Applicable

Features Summary:



Inventory View has the following features as shown in the above image:

1. Refresh View

Using this feature, the user will be able to view the data records based on the following selection criteria

- Single or multiple factories selection
- Single or multiple warehouses selection within the selected factory/factories
- The filter criteria column should show all the columns in the list
- Show Historical Lots as toggle to display or filter the historical lots
- Clicking on "Refresh List" button will display the records based on the selection criteria as mentioned above

2. Search Criteria

This section will be useful for the user to define multiple search criteria with different fields which will be applied while displaying the inventory data records. The selection criteria can be saved with the name so that it can be retrieved later

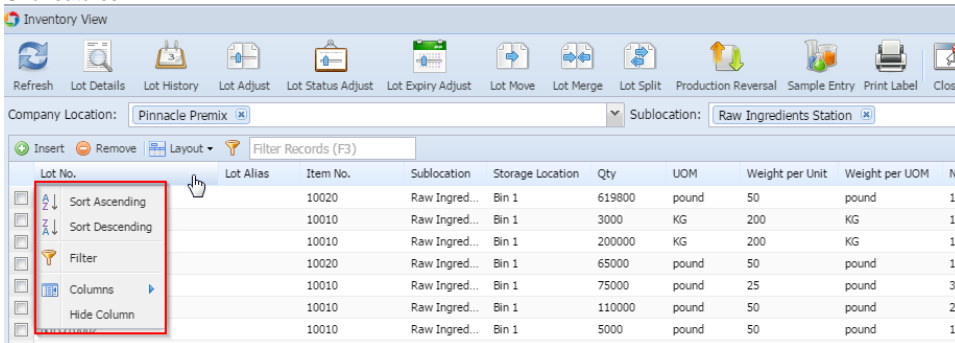
3. Lot level operations

The options available in "Lot level operations" will be useful to perform unique operations on the selected lot

4. General Features

General features cover the features that are more generic like Inventory View GUI related features.

5. Grid features



User should be able to sort records and select columns based on the requirement.

6. Show historic lots

Application will not load the records where the lot quantity is 0 by default. These are called historical lots. User can see these lots by selecting the 'Show Historical' check box.

