

Consignment Group

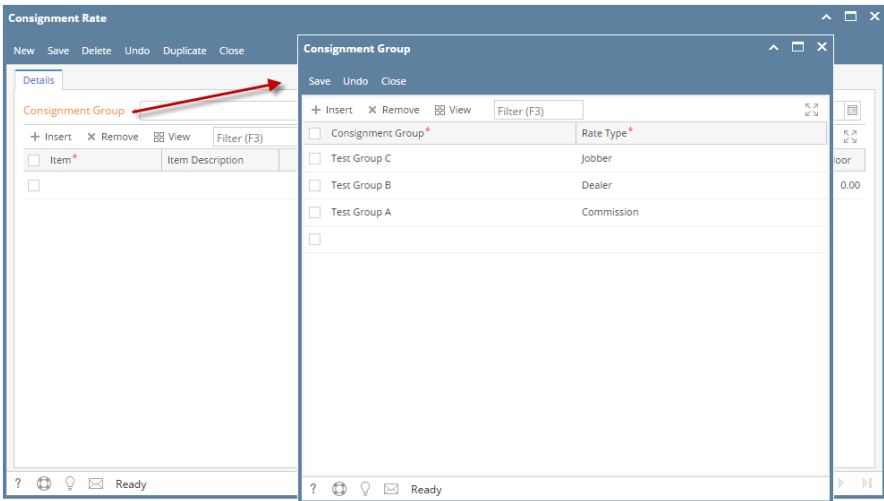
This screen is needed to be setup first to be able to add Consignment Rate record.

To be able to access Consignment Group screen, you may follow either of the following:

a. Go to **Meter Billing > Consignment Rate**, and from Consignment Rate Search, click **Consignment Group** button.

Consignment Rate										
New Open Consignment Group Refresh Report										
Consignment Rate										
View Filter (F3) 6 record(s)										
Consignment Group	Rate Type	Effective Date	Item No	Item Description	Base Pump Price	Base Rate	Interval Pump Price	Interval Rate	Consignment Floor	
<input type="checkbox"/> Test Group A	Commission	6/8/2017	MB-Item 001	MB-Item 001 Desc	5.000	5.000	5.000	5.000	5.00	
<input type="checkbox"/> Test Group A	Commission	6/8/2017	MB-Item 002	MB-Item 002 Desc	10.000	10.000	10.000	10.000	10.00	
<input type="checkbox"/> Test Group A	Commission	6/13/2017	MB-Item 001	MB-Item 001 Desc	5.000	5.000	5.000	5.000	5.00	
<input type="checkbox"/> Test Group A	Commission	6/13/2017	MB-Item 002	MB-Item 002 Desc	10.000	10.000	10.000	10.000	10.00	
<input type="checkbox"/> Test Group A	Commission	6/13/2017	MB-Item 001	MB-Item 001 Desc	5.000	5.000	5.000	5.000	5.00	
<input type="checkbox"/> Test Group A	Commission	6/13/2017	MB-Item 002	MB-Item 002 Desc	10.000	10.000	10.000	10.000	10.00	

b. Go to **Meter Billing > Consignment Rate**, and click **New** button or open existing record. From Consignment Rate screen, click **Consignment Group** by permalink.



Grid Details :

Consignment Group: Enter consignment group, this will show on consignment group combo box from Consignment Rate screen

Rate Type : Select rate type from the following: Commission, Dealer and Jobber

Pages

- [How to Create Consignment Group](#)
- [How to Delete Consignment Group](#)