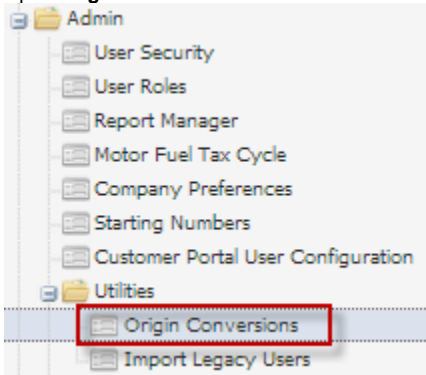


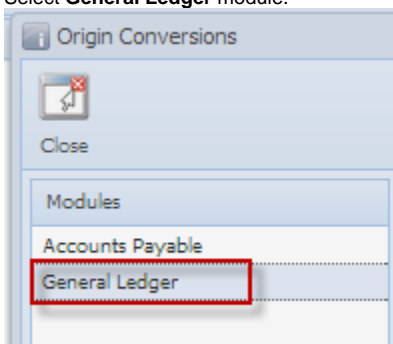
How To Build Account Structure from Origin Setup

Here's how to build account structure from Origin setup:

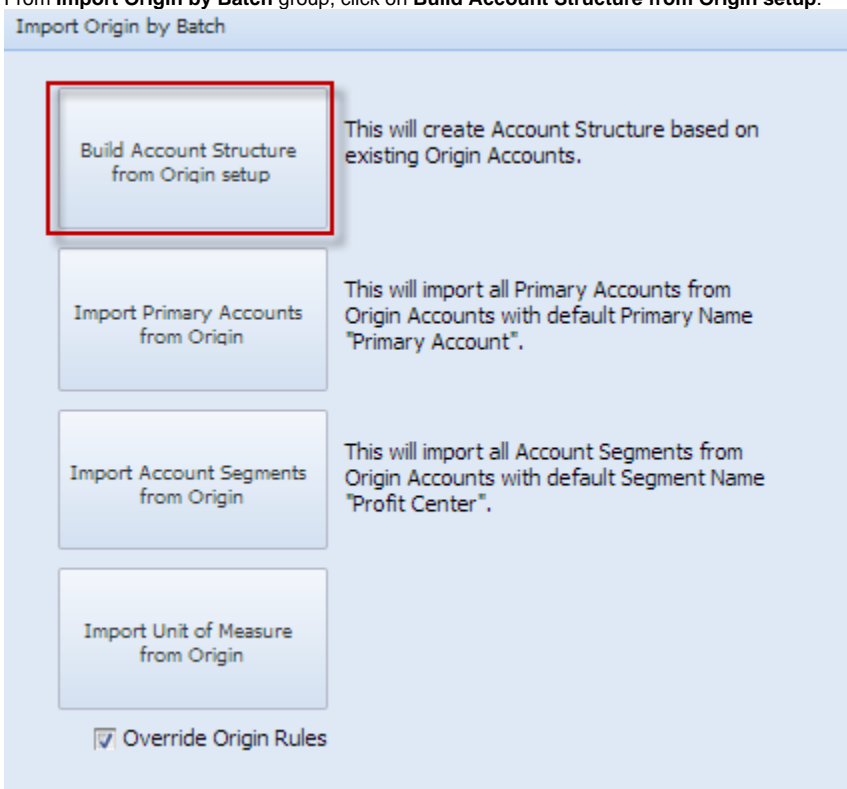
1. Open **Origin Conversions** screen from **Admin > Utilities**.



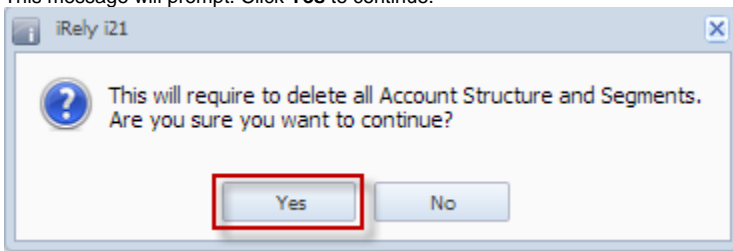
2. Select **General Ledger** module.



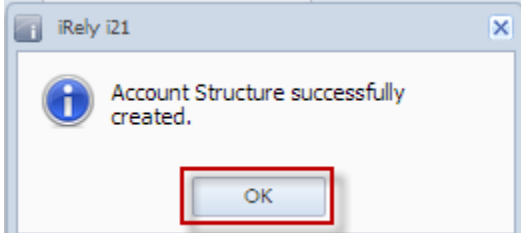
3. From **Import Origin by Batch** group, click on **Build Account Structure from Origin setup**.



4. This message will prompt. Click **Yes** to continue.



5. After the importing is finished, a message prompts. Click **OK** to close.



6. Open **Account Structure** screen from **General Ledger > Maintenance** to check the imported Origin account structure.