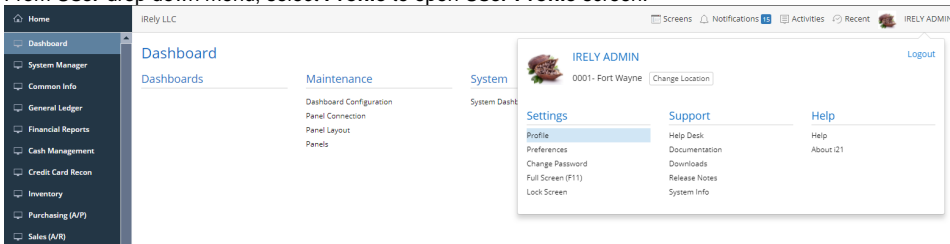


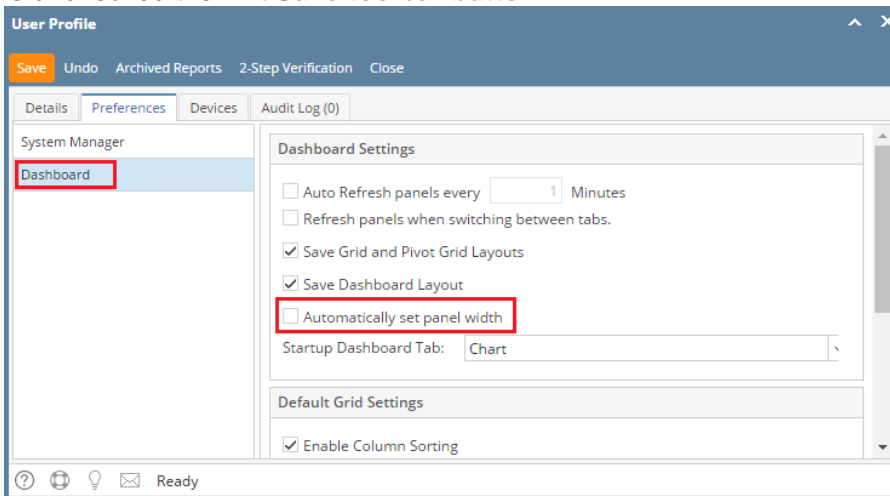
# How to Resize Panels

Are your panels squeezed too close together? Resizing your panel width can be done within the dashboard for each column of panels.

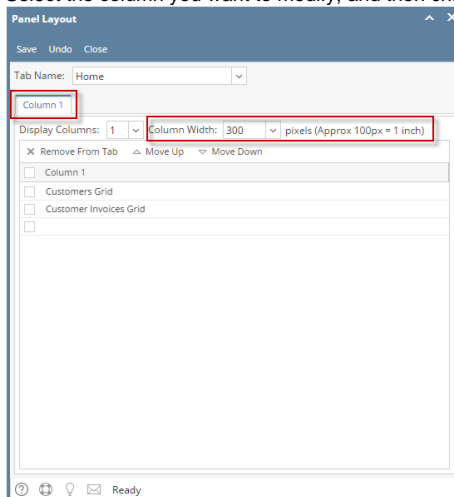
1. From **User** drop down menu, select **Profile** to open **User Profile** screen.



2. Navigate to **Preferences Tab > Dashboard** and make sure that 'Automatically set panel width' option is unchecked then hit **Save toolbar button**.

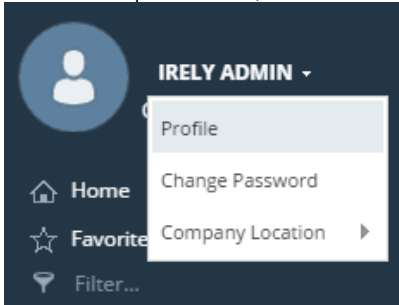


3. There are two (2) different ways of manually setting the panel size.
  - a. The first one is by setting the desired panel size on **Panel Layout** menu.
    - i. Open the Panel Layout screen by clicking the **Panel Layout** menu from the Dashboard main Menu.
    - ii. Select the column you want to modify, and then change the **Column Width** to your desired size.

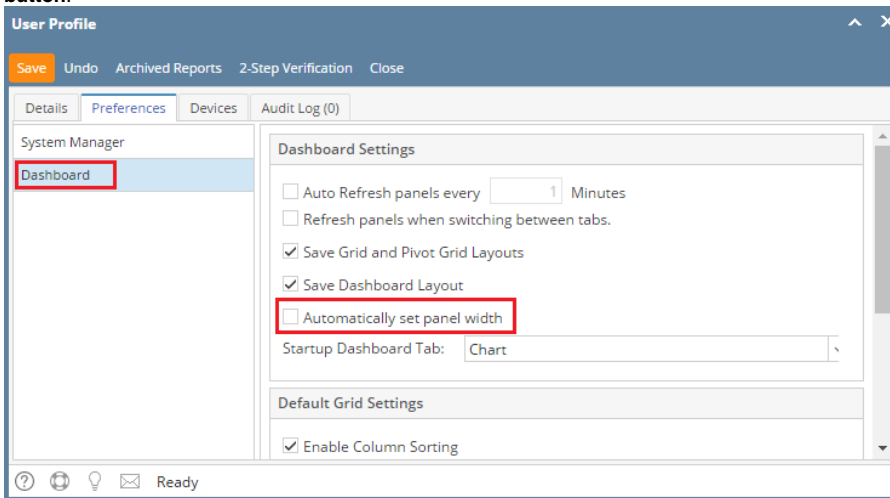


- iii. Finish by clicking the **Save** then **Close toolbar button**. Changes will automatically cascade on dashboard.
- b. The second one is to drag and drop the panel border to your desired size. (Applicable for changing panel height)
  - i. Open the Dashboard screen by clicking the **Display Dashboard** menu from the Dashboard main Menu.
  - ii. Navigate to the panel you want to resize and click on the border then drop it to your desired size.

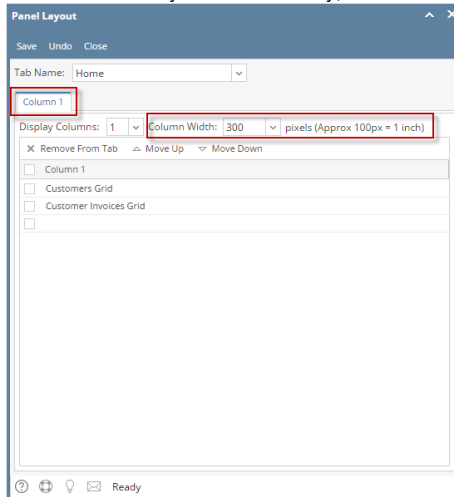
1. From **User** drop down menu, select **Profile** to open **User Profile** screen.



2. Navigate to **Preferences Tab > Dashboard** and make sure that '**Automatically set panel width**' option is unchecked then hit **Save toolbar button**.



3. There are two (2) different ways of manually setting the panel size.
  - a. The first one is by setting the desired panel size on **Panel Layout menu**.
    - i. Open the Panel Layout screen by clicking the **Panel Layout menu** from the Dashboard main Menu.
    - ii. Select the column you want to modify, and then change the **Column Width** to your desired size.



- iii. Finish by clicking the **Save** then **Close toolbar button**. Changes will automatically cascade on dashboard.
- b. The second one is to drag and drop the panel border to your desired size. (Applicable for changing panel height)
  - i. Open the Dashboard screen by clicking the **Display Dashboard menu** from the Dashboard main Menu.
  - ii. Navigate to the panel you want to resize and click on the border then drop it to your desired size.