


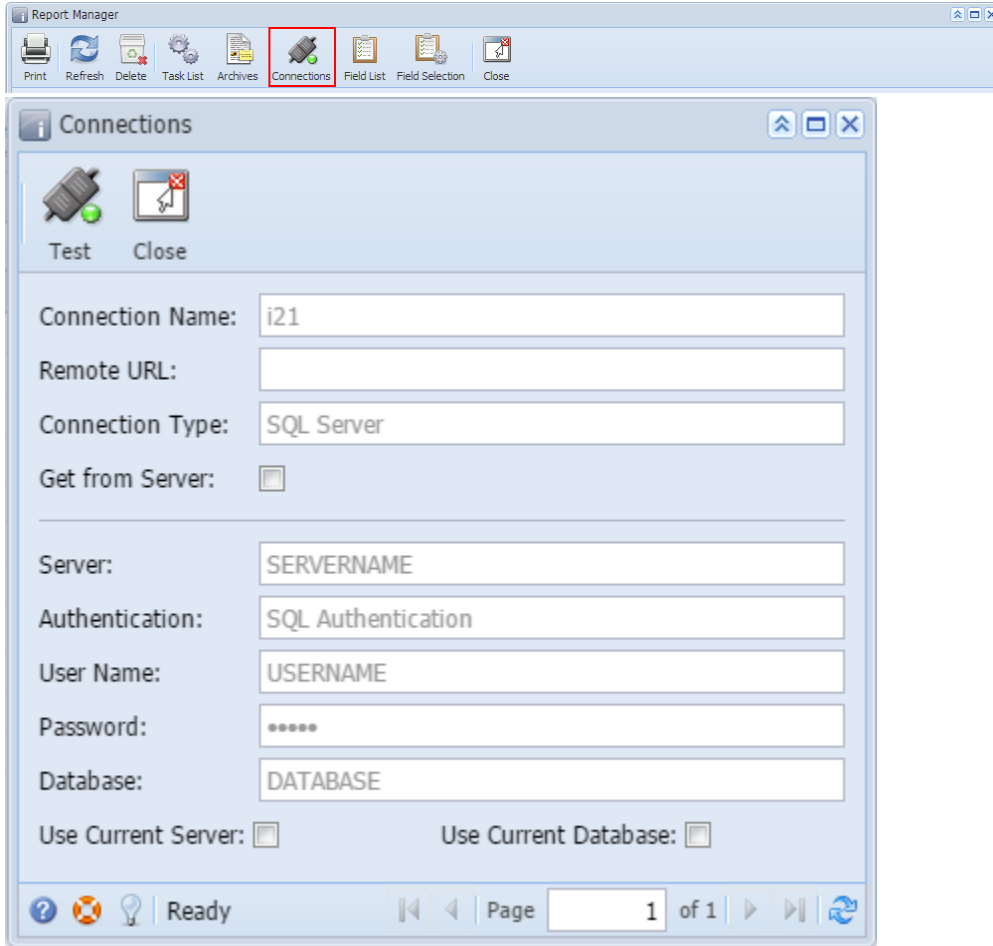
# Connection


**Connections screen** is used to view the existing connections to database. It tells the report where to connect when getting its data source.

 Only Security user can add/edit/delete connections.

**How to open the Connections screen:**

1. Open the **Report Manager screen**. Refer to [Report Manager](#)
2. Click the **Connections toolbar button**.

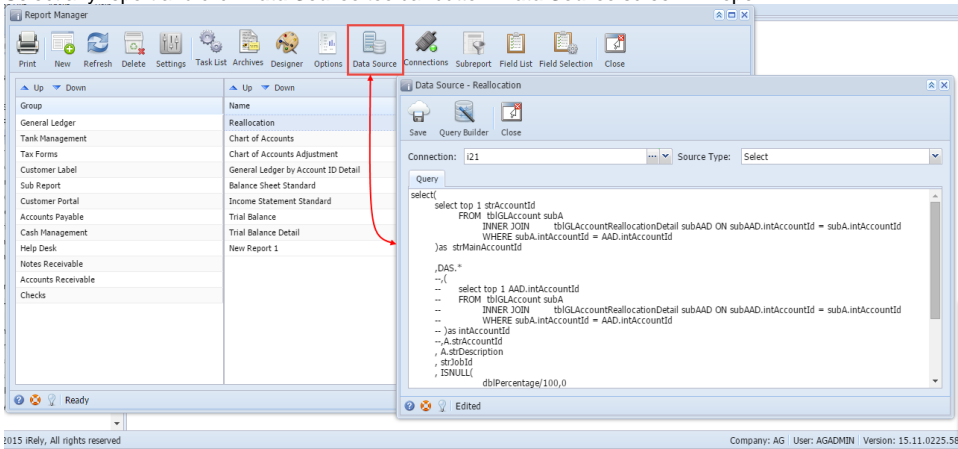


 Only Security user have access to Data Source screen.

**How to open the Connections screen via Data Source screen:**

1. Open the **Report Manager screen**. Refer to [Report Manager](#)

2. Select any report and click **Data Source** toolbar button. **Data Source** screen will open



3. Click the ellipses button on the **Connection** field

