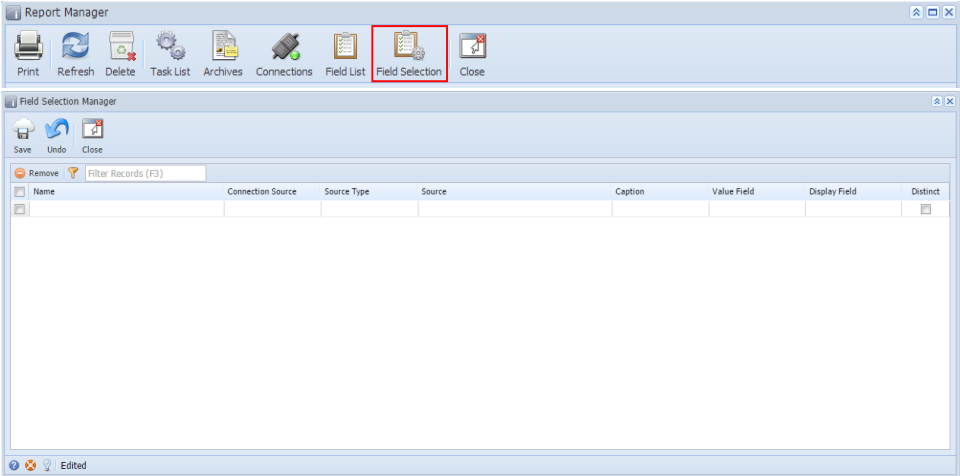


Field Selection Manager

Field Selection will get the actual data base from its own data source and connection. The records entered and saved in this screen is used on the [Field List Manager](#).

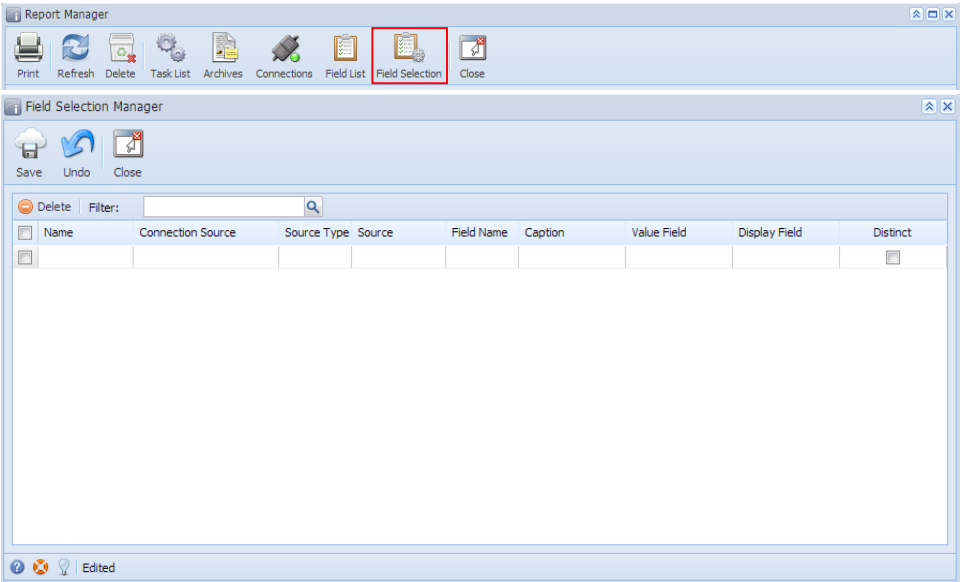
How to open the Field Selection Manager screen:

1. Open the **Report Manager** screen. Refer to [Report Manager](#).
2. Click the **Field Selection** toolbar button.



How to open the Field Selection Manager screen:

1. Open the **Report Manager** screen. Refer to [Report Manager](#).
2. Click the **Field Selection** toolbar button.



Page

- [How to Configure Field Selection Manager](#)
- [Source Type](#)